

## Upcoming Events

### Tonight: Eagleton Alumni Panel

**Eagleton Institute** OF **Politics**  
**ALUMNI PANEL**

Come network with alumni of the Eagleton Fellowship and Undergraduate Associates Programs. Panelists will discuss their current positions, career paths, and advice for students with current Undergraduate Associates and the audience.

**Monday, November 30, 2020 at: 6:30pm EST**  
Open to all current Rutgers students and Eagleton Institute alumni  
Register: [eagleton.rutgers.edu/events](http://eagleton.rutgers.edu/events)

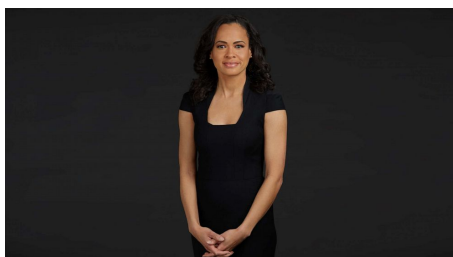
RUTGERS

**Panelists Include:**

-   
**Elie Honig**  
Legal Analyst, CNN  
(1997 Associate)
-   
**Henal Patel**  
Director of Democracy & Justice Program, New Jersey Institute for Social Justice  
(2013 Fellow)
-   
**Keith Davis**  
Managing Partner, Nehmad Perillo Davis & Goldstein  
Chair Atlantic County Republican Committee  
(1997 Fellow)
-   
**Davon McCurry**  
Director of Legislative Affairs, New Jersey Department of Environmental Protection  
(2017 Associate)

[Register](#)

### December 2: Ascension 2020: Black Women in Media, Politics, and Power



Join Eagleton's [Center for American Women and Politics](#) for its annual Senator Wynona Lipman Chair in Women's Political Leadership Lecture, featuring this year's Chair, *ABC News* Correspondent Linsey Davis. Davis joined *ABC News* in 2007 and contributes reports to programs across the network's lineup of news shows; she has reported on major news stories spanning the globe and co-moderated one of the Democratic presidential primary debates in 2019. **Wednesday, December 2nd at 1pm EST on Webex.**

The [Lipman Chair](#) honors the legacy of Wynona Lipman, the first Black woman in the New Jersey State Senate, and is made possible through generous support from the New Jersey Legislature.

[Register](#)



# Survey Research and Diversity and Inclusion

Presented in Partnership with the  
Eagleton Institute of Politics

A panel of distinguished speakers highlighting research methods, survey findings, the power of survey data to drive change, and diversity efforts in the survey research industry.



**Neil Ruiz**  
Associate Director  
at Pew Research  
Center



**Dalia Mogahed**  
Director of Research  
at ISPU



**Chance Patterson**  
Founder of  
Chance Impact



**Tamara Terry**  
Inclusion and Equity Chair  
for AAPOR and Research  
Survey Scientist at RTI  
International

Wednesday December 2, 2020  
from 5 PM to 7 PM Eastern (US)

Virtual Meeting

Thank you to our generous sponsors for making events like this possible



Join Eagleton and the Pennsylvania/New Jersey chapter of the American Association for Public Opinion Research on Wednesday, December 2nd for a panel of distinguished speakers highlighting research methods, survey findings, the power of survey data to drive change, and diversity efforts in the survey research industry.

[Register](#)

## Support Eagleton's Work

Your [contribution](#) can help Eagleton develop new knowledge about American politics and political change and prepare a new generation of students for political participation and civic engagement.

[Donate](#)

## Center for Youth Political Participation Update

[Young Elected Leaders Project](#)

- 1 **14.5% of all candidates were Millennials**
- 2 **8.69% of all candidates were 35 or younger**
- 3 **8.51% HoR, 9.79% Senate candidates ≤35**
- 4 **37 of the Millennial candidates had run in 2018**

[Brittany Anlar](#), graduate research assistant for Eagleton's [Center for Youth Political Participation](#) (CYPP) and political science doctoral candidate, spoke to students in CYPP's Darien Civic Engagement Project class about the Center's Young Elected Leaders Project (YELP) research. Anlar and the YELP team are working on research that analyzes young adults holding office and young adults who ran for office in 2020.

The 2020 YELP research found:

- The percentage of Millennial candidates increased from 9% of all candidates in 2018 to 14.5% of all candidates in 2020
- The percentage of Millennial-elects slightly increased from 6.21% in 2018 to 6.99% in 2020.

[Learn more](#)

## RU Ready in the Classroom

An initiative for fostering youth civic engagement in their communities, [RU Ready in the Classroom](#) provides evidence-based resources and lesson modules to support high school educators in teaching democracy. This CYPP initiative includes lesson modules and supplemental resources.

[Learn more](#)

---

## CAWP Research and Resources

### Women Voters are Key to Biden Victory, Election of First Woman Vice President

According to CAWP's initial analysis of exit poll and election survey data, President-elect Joe Biden and Vice President-elect Kamala Harris relied heavily on women voters within various demographic groups for their electoral success in 2020.



Created by CAWP

"Specifically, Black women, Latinas, and college-educated white women played key roles in delivering the presidency to the Biden-Harris ticket. In contrast, non-college-educated white women and women who identify as evangelical continued to provide a loyal base of support for President Donald Trump," according to CAWP's press release.

[Learn more](#)

## CAWP Resources for the Presidential Transition

As part of the transition from candidate to president, President-elect Joe Biden is selecting members of his cabinet and administration. CAWP shared resources about women who have served in presidential administrations, including:

- [Fact Sheet: Women Appointed to Presidential Cabinets](#). This fact sheet includes data on women who have served in Cabinet-level positions by party, position, administration, and professional background, as well as notable milestones and brief biographical details on all women who have served in presidential Cabinets and Cabinet-level positions.
- [High-Level Presidential Appointments](#). This page includes information on women currently serving in high-level positions in the present presidential administration, including non-Cabinet positions.

[Learn more](#)

---

## Fall 2020 Louis J. Gambaccini Civic Engagement Series

The Gambaccini Civic Engagement Series was established to honor Lou Gambaccini's legacy in public service and his lifelong dedication to upholding the highest standards of civic responsibility. This fall, Eagleton hosted two events as part of the Gambaccini series.

### Watch Video: A Time to Build



Egleton and the AEI Executive Council at Rutgers hosted a conversation with Dr. Yuval Levin about his book, *A Time to Build*, and his views on the social crisis Americans are facing today as a result of culture wars and political polarization.

"We need healthy, functioning, and formative institutions if we're going to have a free society. Part of the challenge we face now is both the loss of trust in those institutions and an actual loss of capacity among those institutions to... enable us to be free," said Dr. Levin, who is the director of Social, Cultural, and Constitutional Studies at the American Enterprise Institute.

"We're living in a moment where there is a social crisis in American life. We can see that in the polarization and breakdown in our politics, we can see it in the intensity of some of our cultural debates, we can see it in people's private lives... These problems are connected. They all strike me as forms of alienation - a sense that we are somehow disconnected from the larger society that serves other people but not us. That frustration... is a big part of what underlies the frustration of our politics - left and right," Levin continued.

## Watch Video: Trans Visibility and Empowerment 2020



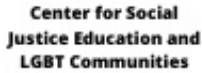
Minneapolis Council Vice President Andrea Jenkins, the first African American openly trans woman to be elected to office in the United States, spoke with the Rutgers community during Transgender Awareness Week.

"No one ever really thinks about the sheer strength of will, resilience, and quite frankly resistance that transgender people exhibit every day," said Jenkins, who is also a writer, performance artist, poet, and transgender activist.



"For many years I worked behind the scenes [in politics] and was really comfortable in that space. But in 2017... I came to the decision that we have to have a voice in what happens in our communities - and not only just have a voice, but we must have a seat at the table and be able to drive the conversation," Jenkins continued.

This program was sponsored by:



---

## The Politics of Water and Lead

### What Kind of Policy Is Drinking Water?

Environmental

Infrastructure

Public Health



Earlier this month, the [Eggleton Science and Politics Initiative](#) hosted its fall semester workshop which brought together scientists and academics from around the world for a virtual conversation about the politics of water and lead.

Megan Mullin, Ph.D., associate professor of environmental politics at Duke University, and Elyse Pivnick, senior director of environmental health at Isles, talked about the role of government in disparities, system vulnerabilities, and social determinants of health.

[Watch Video](#)

---

## Eggleton in the news

### Rutgers professor discusses potential for faithless electors in 2020 presidential election



[The Daily Targum](#) interviewed Eggleton director [John J. Farmer, Jr.](#) about electors.

"The United States is not a 'pure' democracy, but a democratic republic," he said. "Our founders were suspicious of concentrations of power, and government by sheer popular vote raised, for them, the specter of the tyranny of the majority and the prospect of the trampling of individual and states' rights."

"Nothing in the Constitution requires the individual electors to be faithful to this scheme, but 30 states have enacted statutes requiring electors to be faithful to the results of the popular election, and the U.S. Supreme Court, in a decision from earlier this year, upheld the validity of statutes that impose sanctions on faithless electors," Farmer said.

## Women set to take key roles in Biden administration



[The Hill](#) interviewed CAWP director [Debbie Walsh](#) about President-elect Joe Biden's potential cabinet selections and his transition team.

"Biden said in his victory speech that he wanted his administration to 'look like and act like' America, signaling he would elevate women to powerful positions in a similar way he did on his campaign.

'He did that with the appointment of Kamala Harris and he's clearly doing that in who he is picking to be a part of his transition,' said Walsh.

'If the goal at the end of the day is to have an administration that looks like America, having a transition team that looks that way will only make that process easier,' she added."

## Party Bosses Once Again Control NJ's Redistricting Discussions



[The Gothamist](#) interviewed Professor Farmer about the New Jersey redistricting process.

"Former Attorney General John Farmer was the lawyer to the tiebreaker in 2011 and also served as the tiebreaker in congressional redistricting. He says New Jersey's system is better than many states where the party in control of the legislature redraws the district maps. But Jersey still needs reform."

---

## On Social



ru\_eagletoninstitute



ru\_eagletoninstitute This year is the centennial anniversary of the #19thamendment. Did you know that Eagleton's founding donor was a suffragist?

#Rutgers #RutgersPride @womenandpolitics @RutgersCYPP @Rutgersu @Rutgersnb

STAY CONNECTED:

