

RUTGERS  
THE STATE UNIVERSITY  
OF NEW JERSEY



EAGLETON INSTITUTE OF POLITICS

2011 | 2012

About Eagleton

1

Message from the Director

2

Education Programs

6

Centers and Programs

16

Events

20

Donors

22

Alumni Committee, Visiting  
Associates, Faculty and Staff

**Inside back cover**

Eagleton Online



## ABOUT THE

# Eagleton Institute of Politics

**T**HE EAGLETON INSTITUTE OF POLITICS EXPLORES STATE AND NATIONAL politics through research, education, and public service, linking the study of politics with its day-to-day practice. Established in 1956, the Institute focuses attention on how contemporary political systems work, how they change, and how they might work better.

Eagleton's faculty, centers, and programs specialize in the study of politics and government both nationally and in New Jersey, especially state legislatures and governors; public opinion polling and survey research; women's participation in politics; minority and immigrant political behavior; campaigns, elections, and political parties; ethics in politics and government; youth civic education and political engagement; and New Jersey politics. The Institute includes the Center for American Women and Politics (CAWP), the Center for Public Interest Polling (CPIP), and the Center on the American Governor (CAG).

For Rutgers graduate and undergraduate students, Eagleton offers a range of education programs, including graduate fellowships, an undergraduate certificate, research assistantships and internships, and opportunities to interact with political practitioners. The Institute also convenes conferences and other forums for the general public. In addition, Eagleton undertakes projects to enhance political understanding and involvement, often in collaboration with public leaders, government agencies, the media, nonprofit groups, and other academic institutions.



# Message from the Director

SUMMER 2012

**W**ORRISOME SIGNS OF DYSFUNCTIONAL BEHAVIOR HAVE DOMINATED THE POLITICAL NEWS. It's common to hear concerns that something fundamental is awry. Will citizens opt out of civic participation in a public square polluted by the sights and sounds of an increasingly toxic environment? Will people – young and old – feel less and less capable of solving public problems and making our system work? Will they lose sight of an uplifting American dream and walk away from feeling responsible for its realization? Frightening, unacceptable scenarios.

At the Eagleton Institute of Politics, in good times and bad, we've cast our lot with the American political system. Not tempted by cynicism or paralysis – two unproductive states – we remain devoted to a belief in the value of education. We collect, research and analyze the facts, measure and share the readings of public opinion, create forums for public discussion, examine best practices in leadership, and educate tomorrow's leaders. Each faculty member, program director, and research scholar approaches students and audiences with enthusiasm, introducing them to a political history and governmental system with which we hope they will engage, whether as active, well informed citizens or through careers in public service.

Is the next generation ready to learn and lead? The fact is that, despite the steady stream of bad news assaulting them from all directions, year after year a growing number of students compete for places in our programs, arriving at Eagleton with an appetite for involvement and change. The words of one student from our 2011 Political Campaigning course – typical of the overall response – remind us why we continue to teach the fundamentals:

*This course has encouraged me to pursue my interests and follow my heart, knowing that with enough hard work, I can attain any goal. I was inspired time and time again, less by the lofty accomplishments of the various guest speakers than by the road they took to achieve their goals and make a difference. Seeing with my own eyes that politicians, journalists and consultants are regular, hard-working people confirms the idea that I, too, can change the world by applying myself to something I care deeply about.*

When students walk through the front door of the Eagleton Institute, we do not hand them rose colored glasses or distribute perfectly painted pictures of a theoretically idealized democracy. We offer lessons in history, expand their knowledge with literature, challenge them to think critically, and encourage debate about pressing issues. We introduce students to today's leaders and offer hands-on experience working in places where decisions are made that affect their lives. We work to inspire, inform, and connect them to public institutions and political people, showing them how to use tools required for serving and leading.

The tougher the times, the more pressing the challenge to educate. This report aims to open a window onto the many ways the Eagleton Institute of Politics strives to advance responsive, informed, effective, ethical leadership and governance and to deliver America's founding promises to new generations. As you read, I hope our lasting commitment will shine through.



Ruth B. Mandel



## PROGRAMS FOR

## Graduate and Undergraduate Students

**STUDENTS – BOTH GRADUATE AND UNDERGRADUATE** – are vital participants in all program areas at Eagleton. Through certificate programs as well as individual classes, research and other projects, the Institute offers opportunities for direct interaction with its faculty and staff, helping students deepen their knowledge and understanding of the practices of politics and governing.

**EAGLETON FELLOWSHIP PROGRAM FOR GRADUATE STUDENTS**

The Eagleton Fellowship program was one of the original programs established when the Institute was founded in 1956. Now open to Rutgers graduate students in any school or discipline, the program connects Fellows to the practice of politics and public affairs through a fall-semester course followed by a spring-semester part-time placement in a government office or agency. The fellowship, which also includes special seminars and informal interaction with political practitioners, offers a deep, hands-on understanding of politics in the context of each student's field of academic study.

The 27 students selected for the 55th class of Fellows represented 12 programs from schools on the New Brunswick, Camden and Newark campuses. (See class list on page 4.) During the fall 2011 semester, eight Fellows took the course on Legislative Policymaking taught by Professor Alan Rosenthal, and the other 19 took the Seminar in American Politics co-taught for the ninth time by a bipartisan team of experienced practitioners, Joe Doria and Pete McDonough. Doria is a former commissioner of the New Jersey Department of Community Affairs, and former legislative leader and mayor, while McDonough is the current vice president for public affairs at Rutgers University, a communications, political and public affairs specialist with an extensive background in state and national politics and government.

Spring 2012 placements enabled the Fellows to spend at least 15 hours a week immersed in various state and federal units of government. (See table on page 5.) Throughout the year, Fellows took part in special sessions, including networking dinners with Eagleton's Visiting Associates and monthly policy seminars at Eagleton and in Trenton. The Fellows traveled to Annapolis, following an Eagleton Fellowship tradition, to meet with legislative and executive branch leaders from Maryland and experience a different state government in action.

This year the Fellows and Undergraduate Associates were provided the once-in-a-lifetime opportunity to tour the new World Trade Center site, thanks to the generosity of Port Authority deputy executive director and Eagleton Visiting Associate Bill Baroni. The group enjoyed the

view from the upper floors of the new One World Trade Center building, received a behind-the-scenes tour of the underground museum with the site engineer, and relived the events of 9/11 with a Port Authority police officer at the memorial.

Eagleton has selected 27 outstanding graduate students for the 2012-2013 academic year program from a near-record high pool of 127 applicants.

Eagleton Fellowships are made possible through the generosity of Harold and Reba Martin, Eagleton alumni, Rutgers University, the New Jersey State Legislature and Governor's Office.

**EAGLETON UNDERGRADUATE ASSOCIATES PROGRAM**

The Eagleton Undergraduate Associates Program, offered in collaboration with the Department of Political Science, has existed since 1974. This certificate program offers a select group of students the opportunity to study government and politics together during their last three semesters at Rutgers. Through special seminars, a supervised internship, and discussions with governmental officials and political practitioners, Undergraduate Associates explore applications of political science and other academic disciplines to the practice and processes of American politics.

The discussions we've had in this program have taught me more than any other course at Rutgers. Those discussions during seminars and the out-of-class Eagleton talks and events were the most valuable parts of this experience.

**2011-12 UNDERGRADUATE ASSOCIATE**

Undergraduate Associates participate in three seminar courses beginning in the spring of their junior year. Associates spend 10 to 15 hours per week during their senior year working with a government agency, state office, or public interest group. (See table on page 5.)

The Class of 2012 included 20 students from the School of Arts and Sciences SAS in New Brunswick, three joint majors with SAS and the Edward J. Bloustein School of Planning and Public Policy, a Camden Arts and Sciences major, and one student from the Rutgers Business School. The 38th class of Undergraduate Associates represented sixteen majors and fifteen minors. (See class list on page 4.)

Undergraduate Associate Kevin Tobia was one of only 15 students in the world to receive a full two-year scholarship for graduate study in philosophy at Oxford through a bequest from Ahmet Ertegun, the founder of Atlantic Records, and his wife.

# Political Campaigning Course

**T**HE EAGLETON INSTITUTE, IN COLLABORATION with the Department of Political Science, offers a popular undergraduate course on Political Campaigning during the fall semester. This year, the class focused on New Jersey's state legislative campaigns as case studies for examining the techniques, tactics, events, and media coverage involved in elections. For the third time the course was co-taught by the bipartisan duo of Mike DuHaime and Maggie Moran, two of New Jersey's most respected young campaign leaders and both Rutgers graduates. They were supported by assistant research professor David Andersen. Many past students in the course – like DuHaime himself – have gone on to careers in politics.

DuHaime, a partner at Mercury Public Affairs, is among the most accomplished political operatives in the country and was named by *Time* magazine as one of the “40 under 40 rising stars of American politics.” DuHaime was the lead strategist for New Jersey Governor Chris Christie's 2009 campaign. He headed the Republican team in the state's congressional redistricting process in 2011 and is serving as a senior consultant to the Republican National Committee's political department as well as directing the National Republican Senatorial Committee's independent expenditure efforts in 2012. Moran has vast experience in corporate communications and business development, federal and state government, political campaigns and labor relations. In 2010 Moran served as senior advisor to the successful Cuomo for Governor campaign. She has served in senior roles for major public affairs campaigns in New York and New Jersey, worked for two United States Senators, managed statewide political campaigns for President and Governor, and served as the chief of management and operations for the State of New Jersey.

DuHaime and Moran brought to class key players from the state and national political stage including candidates, consultants, pollsters, journalists, lobbyists, elected officials,

officeholders and operatives, who offered valuable frontline insights and real-world perspectives on political campaigning.

Besides access to insider views of the campaigns in progress, the students had the opportunity to experience their teachers working as a team and debating issues together with respect and good humor despite strong political differences.



A highlight this year was a lengthy class visit by Governor Chris Christie.

## IGERT Fellows

**PH.D STUDENTS IN RUTGERS UNIVERSITY'S INTEGRATIVE GRADUATE EDUCATION AND RESEARCH TRAINEES (IGERT)** program on the integrated science and engineering of stem cells have a unique opportunity to conduct scientific research and pursue a new multidisciplinary graduate curriculum drawn from engineering, molecular biosciences, physical sciences, business, public policy, and management. Throughout the year, Eagleton facilitates workshops with policy makers, IGERT fellows and Eagleton fellows to develop their abilities to communicate across disparate disciplines. IGERT trainees also acquire global perspectives through internships and workshops with leading stem cell researchers at more than 15 sites in Europe and Asia.

The course dove deep into the world of US/NJ politics, deeper than I could have ever expected a college course to go, all the while remaining non-partisan. I came away from this class knowing far more about the people and policies that govern my everyday life. The guest speakers were a fabulous complement to the already fantastic course instructor. Easily the best class at Rutgers University. I was engaged at every turn, and found myself eagerly awaiting next week's lecture. Every student seriously considering a career in covering politics must take this class. ... Thank you for a wonderful experience that surely cannot be duplicated. Bravo. What a wonderful semester it has been.

**2011 POLITICAL CAMPAIGNING COURSE STUDENT**



IGERT students had a chance to meet former Congressman Patrick Kennedy, this year's Lewitt Lecturer at Eagleton, when he spoke about his funding initiatives for brain health research.



## CLASS OF 2012

# Eagleton Fellows Degree/Major

### GUILLERMO ARTILES

JD/Law

### DAVID BAUMWOLL

JD/Law

### CRAIG BRONSNIK

JD/Law

### PRIMITIVO CRUZ

JD/Law

### CLIFFORD DAWKINS

MPP/Public Policy

### DANIEL GAMER

JD/Law

### GREGORY HANSCH

MSW/Social Work

### KATE HENRY

MPP/Public Policy

### RALPH HUMPHREY

JD/Law

### MARK IACONELLI JR.

JD/Law

### HEATHER JAMES

PhD/Political Science

### ANDREW KUNKA

MPAP/Public Affairs  
& Politics

### ELENA LESLEY

MS/Global Affairs

### LYDIA LOUIS

PhD/Toxicology

### DIANA PASCULLI

JD/Law

### RYAN PETERS

JD/Law

### ERIN PHALON

JD/Law



Associate Director John Weingart and Rutgers Vice President for Public Affairs Pete McDonough visited with Eagleton Fellows.

### BRIAN QUIGLEY

JD/Law

### RABEYA RAHMAN

MA/History

### CHARNEY ROBINSON

MPA/Public Administration

### JORGE SANTOS

MPP/ Public Policy and MCRP/  
City and Regional Planning

### LINDSAY SPERO

JD/Law

### MATTHEW TOYER

JD/Law

### CHRISTINA VOGT

MPA/Public Policy  
and Administration

### YONGHONG CATHY WANG

PhD/Public Administration

### ERIC WEINSTEIN

MPP/Public Policy

### RICHARD WELLS

JD/Law



Several Eagleton Undergraduate Associates lobbied federal lawmakers for student aid programs during the Rutgers Undergraduate Student Advocacy Day on Capitol Hill in Washington, DC.

# Undergraduate Associates Major/Minor

### ZAIN AHMAD

Political Science/Middle Eastern  
Studies/Religion/Labor Studies

### DAHOUH ASKAR

Political Science/History/Philosophy

### JENNA CANTARELLA

Political Science/History/  
European Studies

### AMANDA CRAWFORD

History/Political Science

### WILLIAM EASTMAN

Political Science/Middle Eastern  
Studies/History

### KYRIE GRAZIOSI

Political Science/Women's  
and Gender Studies/Economics

### E. DANIEL JACOB

History/Political Science/  
Philosophy/Religion

### TRISHA JHUNJHNUWALA

Political Science/Comparative  
Literature/French/Philosophy

### KRISHNA KAVI

Political Science/Economics/  
History/Philosophy

### HARINI KIDAMBI

Political Science/Public Health/  
South Asian Studies/Religion

### COURTNEY LANZA

Political Science/English/  
Women's and Gender Studies

### CHRISTINA LOUIS

Political Science/Planning & Public Policy

### AARON MARCUS

Political Science/History

### KEDAR MEHTA

Finance/Political Science/Labor Studies

### STACEY MILLIMAN

Political Science/History

### JOSE PAULINO

Political Science/Organizational Leadership

### JESSICA REMINGTON

Urban Planning/Public Policy/Business Economics

### JOHN RYAN

Political Science/Sociology

### LINDSEY SANTAMARIA

Political Science/Women & Gender Studies

### MORGAN SILLS

Political Science/Cultural Anthropology/  
Women & Gender Studies/Africana Studies

### ASHLEY SZYMANSKI

Political Science/Women & Gender Studies

### KEVIN TOBIA

Philosophy/Cognitive Science/Mathematics/  
Political Science

### SARA TOFIGHBAKHS

Political Science/Art History

### SAMUEL WEINER

Political Science/Jewish Studies

### VALERIE WEISS

Political Science/Italian

FALL 2011 &amp; SPRING 2012

# Classes at Wood Lawn

## ■ Undergraduate

*Byrne Seminar - Political Women: Some Who Dared*  
**RUTH B. MANDEL**

*Internship Seminar for Eagleton Undergraduate Associates*  
**BERT LEVINE**

*Internship Seminar for RU Ready Program*  
**ELIZABETH MATTO**

*Internship Seminar for Youth Political Participation Program*  
**ELIZABETH MATTO**

*PACS, Power and Politics*  
**BERT LEVINE**

*Political Campaigning*  
**MICHAEL DUHAIME AND MAGGIE MORAN**  
**WITH DAVE ANDERSEN**

*Political Leadership*  
**JOSEPH DORIA**

*Practice of Politics*  
**GERALD M. POMPER**

*Processes of Politics*  
**JOHN WEINGART**

*Survey Research*  
**DAVID REDLAWSK**

*Urban Politics*  
**JOSEPH DORIA**

*Women and American Politics – Public Leadership Education Network*  
**KIRA SANBONMATSU**



U.S. Supreme Court Justice Ruth Bader Ginsburg was among the prominent women leaders who spoke to the first-year students in Institute director Ruth B. Mandel's Byrne seminar on a Washington DC visit.



Assembly Republican Leader Jon Bramnick spoke at the closing ceremony for 2012 Eagleton Fellows.

## ■ Graduate

*Eagleton Seminar: Problems in American Politics*  
**PETER MCDONOUGH AND JOSEPH DORIA**

*Gender and Mass Politics*  
**SUSAN J. CARROLL**

*Legislative Policymaking*  
**ALAN ROSENTHAL**

*Proseminar: Women and Politics*  
**SUSAN J. CARROLL**  
*U.S. Congress*  
**ROSS BAKER**

## EAGLETON STUDENT PLACEMENTS

2011-2012

- Eagleton Fellows (graduate)
- + Undergraduate Associates

### STATE OF NEW JERSEY

Office of the Governor • +

Office of the Attorney General •

Department of Banking and Insurance +

Department of Children and Families •

Department of Community Affairs •

Department of Education • +

Department of Environmental Protection •

Department of Health and Senior Services • +

Department of Human Services •

Department of Treasury •

N.J. Board of Public Utilities •

N.J. State Ethics Commission •

Office of Legislative Services •

State Assembly • +

State Commission of Investigation •

State Senate • +

### FEDERAL GOVERNMENT

U.S. Department of Agriculture +

U.S. Department of Housing and Urban Development •

U.S. Department of Justice/District Court +

U.S. Department of Labor •

U.S. Environmental Protection Agency •

### LOCAL, COUNTY AND REGIONAL GOVERNMENT

Office of the Comptroller New York City +

Office of the Mayor, Jersey City +

Office of the Mayor, Newark +

### OTHER PLACEMENTS

Lobbying and political consulting firms +

Museum of Jewish Heritage +

New Jersey Democratic State Committee +

Rutgers Office of Federal Relations +



## CENTER ON THE

## American Governor

**G**OVERNORS IN THE 50 STATES ARE MORE VISIBLE THAN EVER.

In the last year, individual governors have repeatedly attracted attention well beyond state borders, both for bi-partisan approaches that seem elusive in Washington and for new and often controversial approaches to long-standing problems. At the same time, the Republican presidential nomination, captured by a former governor of Massachusetts, also saw at least exploratory efforts by past or present governors from Indiana, Louisiana, Minnesota, New Jersey, New Mexico, Texas and Utah.

At Eagleton's Center on the American Governor (CAG), the only U.S. academic center designed to focus attention on the chief executives in the states, a core team of Eagleton faculty and staff is raising and exploring important themes related to this under-examined area of American government. With both a national scope and a New Jersey focus, CAG aims to enhance knowledge and provide analysis of potential use to current and future governors, while helping academic researchers, journalists, public policy advocates, and government officials better understand and compare the offices in the states and the performance of individual governors.

The Center seeks to illuminate similarities and differences among gubernatorial offices, looking at the backgrounds, skills, personalities and circumstances that contribute to governors' successes as leaders, as well as the performance of individual governors and their impact on their states. CAG also examines how governors have shaped the parameters for national policy debate. Since almost 40% of the nation's presidents (17 out of 43) to date have been governors, their experiences and trajectories take on added significance.

**ON THE NATIONAL FRONT, CAG IS:**

- **SEEDING THE FIELD** – The Center initiated a new grants program to promote the development and dissemination of scholarly research on the role, responsibilities and leadership of governors. See the complete list of the researchers, their projects, and their institutions on page 7.
- **PUBLISHING RESEARCH** – Alan Rosenthal, a longtime Eagleton Institute faculty member and national expert on state legislatures, turned his attention to the executive branch with publication of a book on governors titled *The Best Job In Politics* (CQ Press).
- **SERVING JOURNALISTS** – CNN and other media outlets cited the Center's analysis of past efforts to recall a state governor (*Recalling Governors*) when reporting on the spring 2012 election in Wisconsin while others, speculating in the early summer on former Governor Mitt Romney's pick for a running mate before he announced it, relied on another CAG report, *Governors Who Became Vice President: What's the Precedent for a Governor as Running Mate?*.



- **ASKING QUESTIONS AND RECORDING PERSPECTIVES** – Former Massachusetts Governors Michael Dukakis and Jane Swift visited Eagleton this year and took time to be interviewed for the Center's video archive. Their interviews can be found on the CAG website.
- **BECOMING THE NEXUS FOR INFORMATION ABOUT GOVERNORS** – The Center compiled and includes on its website an inventory of state gubernatorial archives in the 50 states, as well as a bibliography of works on governors in general and in a state-by-state listing.

**IN THE NEW JERSEY SECTION, CAG IS:**

- **BUILDING NEW ARCHIVES** – The Center announced new online archives on the administrations of Governors James J. Florio (1990-1994) and Christine Todd Whitman (1994-2000) as part of its plan to create an online record of New Jersey's living former governors. Eagleton launched these new sections by hosting opening colloquia focused on each governor's transition period and early months in office. Each included panel discussions among key administration figures and legislators as well as opening and closing remarks from the governors. Video-recordings and transcripts from both events are now part of the Florio and Whitman archives on the CAG website.
- In addition to these two new archives now in development, the website includes substantial collections of materials from – and retrospective reflections on – the administrations of Brendan T. Byrne (1974-1982) and Thomas H. Kean (1982-1990).
- **CAPTURING ORAL HISTORIES** – The website now includes video-recordings and transcripts of more than 75 individual interviews, so far focused largely on the administrations of Governors Byrne and Kean, as well as recordings of 15 forums on select policy areas and events.
- **EXAMINING STATE LEADERSHIP AND THE ARTS** – More than thirty public and non-profit arts leaders joined Governor Thomas H. Kean at the New Jersey Performing Arts Center in April for a reflective discussion about state initiatives and policy on the arts under his leadership. The roundtable was recorded and can be viewed on the CAG website.





At the launch of the Florio section of CAG, Governor James Florio chatted with Doug Berman, who served as state treasurer during Florio's administration.



Governor Thomas H. Kean, Eagleton's Nancy H. Becker, and Dr. Alvin Felzenberg, who served as assistant secretary of state in the Kean administration, participate in a roundtable discussion on the arts as part of the Governor Thomas H. Kean Archive within the Center on the American Governor.



Former NJ Governor Brendan Byrne and Eagleton director Ruth B. Mandel listen to comments made by Larry Goldman (l), the founding president and CEO of the New Jersey Performing Arts Center, during a videotaped panel discussion about the role and development of the arts during the administration of Governor Thomas H. Kean.



Eagleton Visiting Associate Bob Smartt lends his internet expertise to the Center on the American Governor, conferring here with unit computing specialist Linda Phillips on the CAG website.

Governor Christine Todd Whitman (r) and her first chief of staff, Judy Shaw (c) visited with colleagues from Whitman's administration at the launch of the Whitman section of CAG.



## RECIPIENTS OF RESEARCH GRANTS FROM THE CENTER ON THE AMERICAN GOVERNOR

# The American Governor: Politics, Policy, Power and Leadership

American Cicero: Mario Cuomo and the Decline of Liberal Politics in America

**SALADIN AMBAR** *Lehigh University*

Governor Claude Kirk, Media, and the Politics of Busing

**MATTHEW DELMONT** *Scripps College*

Estimating Gubernatorial Common Space Scores in the 50 States

**MATTHEW HALL and JASON WINDETT** *St. Louis University*

Judicial Decision-Making on Executive Power Challenges in the U.S. States, 1980-2010

**GBEMENDE JOHNSON** *Hamilton College*

Gubernatorial Veto Powers and Legislative Coalitions

**ROBERT MCGRATH** *George Mason University*

**JON ROGOWSKI** *University of Chicago*

**JOSH RYAN** *Bradley University*

Unilateral Orders at the State Level

**BRANDON ROTTINGHAUS** *University of Houston*

The Female Governor: Policy and Leadership

**KAREN SHAFER** *Walden University*

Woodrow Wilson and the Pragmatist Tradition in American Politics

**TRYGVE THRONTVEIT** *Harvard University*

Examining the Role of Governors in Immigration Legislation and Policies

**SOPHIA WALLACE** *Rutgers, The State University of New Jersey*

## CENTER FOR

## American Women and Politics

**F**OR THE CENTER FOR AMERICAN WOMEN and Politics (CAWP), the last year has been both typical and unusual: typical because ongoing programs continue to develop and thrive, and unusual because 2012 is a distinctive year for women in politics.

**2012: A YEAR OF OPPORTUNITY**

The 2012 Project, CAWP's national, non-partisan campaign to increase the number of women in Congress and state legislatures by taking advantage of the once-in-a-decade opportunities of 2012, began to prove its value as the elections took shape. These contests hold exceptional promise for women because of the new opportunities created by post-census redistricting and reapportionment; moreover, with a presidential election, high voter turnout is anticipated, further improving the chances for newcomers to score victories. For more than two years, CAWP has worked with California political strategist Mary Hughes and her Bay Area team on outreach and mobilization around the country, collaborating with scores of organizations across the political spectrum and with a faculty of

more than 70 former officeholders to encourage women to run.

More than a dozen state-based coalitions of women's organizations have been mobilized to run mini-2012 Projects in more than a dozen states. These coalitions will continue to identify and encourage women to run even beyond the 2012 elections.

No doubt due in part to the work of The 2012 Project, a record number of women have filed to run for the U.S. House of Representatives in 2012, exceeding the previous peak set in 2010 by almost 40. The number of women filing for the U.S. Senate tied the 2010 record, and candidates for the state legislatures have also turned out in force.

**SHAPING THE NATIONAL DISCUSSION**

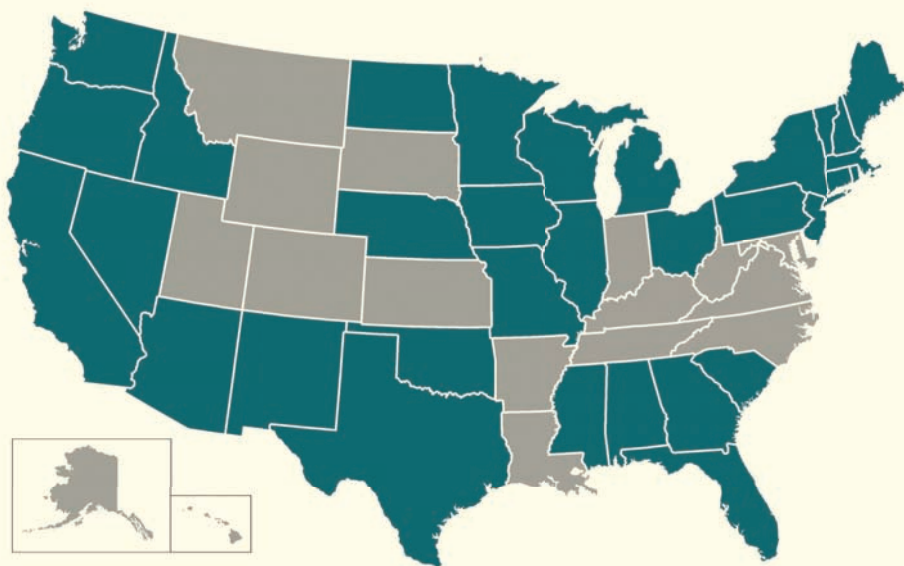
The media, scholars and activists know the history-making numbers because CAWP compiles comprehensive data on women candidates, officeholders and voters, as it has for almost four decades. CAWP's Election Watch, the gold standard for current and historical information about women seeking and holding office, draws daily attention from journalists across the

country. This rich resource allows CAWP to address questions such as whether redistricting in the states harmed women incumbents disproportionately or how the numbers of women legislators are shifting over time in states with term limits.

**CAWP'S EXPERTS ARE IN FREQUENT DEMAND FOR THEIR INSIGHTS:**

- CAWP director Debbie Walsh and senior communications officer Kathy Kleeman were invited to author their second op-ed for *The Washington Post*, discussing whether the "war on women" will propel more women into office.
- Walsh, along with senior scholars Ruth B. Mandel (director of the Eagleton Institute of Politics) and Susan J. Carroll (professor of political science) fielded dozens of media requests for analysis and commentary on questions from Michele Bachmann's presidential prospects to the women's vote to controversies surrounding issues in the states.
- Carroll and Kira Sanbonmatsu, also a CAWP senior scholar and professor of political science, use data gathered by CAWP to expand scholarly understanding of women's political participation through papers and roundtables at major political science conferences. Both were panelists for a roundtable on

■ CAWP works with partners in 32 states on NEW Leadership™, Ready to Run™ and The 2012 Project.



The Ready to Run program empowered me to run a great campaign...and enabled me to empower an entire community of Asian women by inviting me to speak at the conference once I had been elected to office. It is a truly invaluable conference.

**Afsheen Shamsi, Rising Stars alumna and presenter**





"Forecasting the Role of Gender in the 2012 Election" at the annual meeting of the Midwest Political Science Association, where Sanbonmatsu also spoke on "Influences on Women Running for Office."

- Sanbonmatsu and a team of graduate students prepared a series of essays for the Hunt Alternatives Fund and its Political Parity Project summarizing the state of knowledge about women's participation in American politics.

### PREPARING AMERICA'S LEADERS

Ready to Run™, CAWP's non-partisan campaign training program, has been instrumental in lifting New Jersey into the ten best states for women's representation in state legislatures after years in or near the bottom ten. Now in its 15th year, Ready to Run™ and its Diversity Initiatives continue to attract new women to the political process, equipping them with valuable skills and networks.

CAWP's Ready to Run™ model now flourishes in 14 states through the Ready to Run™ National Network, which develops partnerships with colleges and universities as well as a variety of non-profit institutions and agencies. New programs in Michigan, Mississippi, and New Mexico have developed with the support of the W.K. Kellogg Foundation. Other recent additions include California and Idaho.

Using a similar "franchise" approach, NEW Leadership™, the Center's public leadership program for college women,

NEW Leadership™ New Jersey students met Speaker Sheila Oliver in the Assembly chamber.

continues to thrive in New Jersey after two decades while serving as a model for programs across the country. In June, 35 students from 22 New Jersey colleges and universities came to CAWP for the six-day residential program that introduces participants to a variety of political women, teaches them essential skills, and gives them opportunities to test what they are learning through a policy-oriented action project, this year focusing on charter schools. Former Massachusetts Governor Jane Swift keynoted the program, and the students met, Lieutenant Governor Kim Guadagno, Assembly Speaker Sheila Oliver, and a host of powerful women from throughout the state. During their visit to Trenton, they were treated to an impromptu 20-minute meeting with Governor Chris Christie when he entered the Statehouse while the group was on a tour.

Through the NEW Leadership™ National Network, 22 programs based at colleges and universities now serve students in 29 states. New programs kicked off this year in Texas and Arizona, while partners from California and Mississippi began the process of studying CAWP's model to plan their own versions for 2013.



Ready to Run™ participants learned about the nuts and bolts of political campaigns.



CAWP director Debbie Walsh (right) presented pollsters and co-authors Kellyanne Conway and Celinda Lake at a New York City gathering for The 2012 Project.





Participants in the first-ever naturalization ceremony at Rutgers celebrated their initial moment as U.S. citizens.

close, EPID transferred its cache of data on some 1,800 organizations to NJ-211, the statewide social service navigator. Backed by the United Way and the State of New Jersey, 211 will better meet the needs of New Jersey's diverse immigrant communities thanks to this influx of data. EPID now curates the "Immigrant Resources" page for the 211 website.

#### SPEAKING ABOUT IMMIGRATION

In 2011-12 EPID hosted speakers working on the front lines of international immigration, including Padre Alejandro Solalinde, a Mexican priest and advocate, and Congresswoman Yvette D. Clarke, (D-NY-11), both of whom offered first-person accounts of domestic and international struggles. EPID representatives spoke with various audiences, among them: a conference on "Supporting Immigrant Children and Families in Greater Mercer County," held at Princeton University and co-sponsored by the Princeton Area Community Foundation; a lecture for the Rutgers SAS Honors Colloquium on the theme "Where We Belong;" Temple Anshe Emeth's "Consultations on Conscience" program; and a panel of Latino leaders on "The State of Hispanic New Jersey," sponsored by the Hall Institute.

#### CITIZENSHIP RUTGERS

Foremost among EPID's activities has been the dramatic expansion of Citizenship Rutgers (CR), a citizenship assistance project. During its first full year, CR held application assistance events on each Rutgers campus, bringing free, high-quality naturalization application assistance to green card holders wishing to become US citizens.

Among the fifty states, only four can claim more Legal Permanent Residents (LPRs) than New Jersey. While half of New Jersey's 1.8 million immigrants are already citizens, the US Department of Homeland Security counts almost 600,000 LPRs who live in New Jersey. Nor does this flow show any sign of abating. Recent years have seen approximately 60,000 state residents attaining LPR status each year.

#### PROGRAM ON

## Immigration and Democracy

**T**HE EAGLETON PROGRAM ON IMMIGRATION and Democracy (EPID) explores how today's new Americans relate to and participate in the political process. Always an immigrant gateway, New Jersey stands out for the size, diversity and economic range of its immigrant population. More than one in five residents and 28% of the state's workforce are foreign born, and one in three children has an immigrant parent. Following generations of Italians, Russians, Irish and Poles (among others), today's immigrants come to New Jersey from Latin America (45%), Asia (30%), Europe (18%) and Africa (4%).

Now in its fourth year, EPID presents speakers and publishes policy-related research while also building a major initiative of citizenship application assistance to green card holders through Citizenship Rutgers. What unites these initiatives is a mission to link New Jersey to local, state and national conversations about the challenges and opportunities related to the integration of our newest neighbors.

#### RESEARCH

Three years after it began, Rutgers Immigrant Infrastructure Maps (RIIM), an interdisciplinary research project, has built an inventory of organizations created to assist immigrants across the Garden State. RIIM combines original data from a state-

wide survey of immigrant non-profits with information from sources as varied as the New Jersey Department of Education's data on Limited English Proficiency statistics and tax receipts from the US Department of Treasury. It offers policymakers, funders, researchers, elected officials and business leaders a basis for assessing the impact of not-for-profit organizations on immigrant communities statewide. EPID senior advisor Professor Janice Fine, research associate Hyacinth Miller, and project director Anastasia Mann worked with partners such as Professor David Tulloch of the Center for Remote Sensing and Spatial Analysis. Among the questions they addressed: "What has been the impact of the economic recession on immigrant-serving organizations?" "How did the geographic settlement of Asian Indians in New Jersey change between 2000 and 2010?" and "Where are the biggest employers of high-skilled immigrants located?"

Researchers presented these analyses in a webinar for non-profit leaders (May 2012) and a presentation at "The Innovation Bridge," a conference co-sponsored by Einstein's Alley and Mayor Michael Bloomberg's Partnership for a New American Economy, held at the Institute for Advanced Study in Princeton (June 2012). A report on the research will be issued in late 2012.

As the active phase of RIIM came to a



EPID has built Citizenship Rutgers as a way to ensure that those who live, work, pay taxes and otherwise meet federal qualifications can enter the polity with all the rights and responsibilities of citizens under the law. At each campus event, Citizenship Rutgers rolls out the red carpet to green card holders, welcoming them to the state's flagship public research university. Qualified LPRs are treated to free individual consultations with experienced immigration attorneys; knowledgeable, language-appropriate application assistance; passport-sized photos; document certification; citizenship test questions; and ESL referrals.

Adapted from a program now entering its fifteenth year at the City University of New York, CR leverages the talents and resources of all three Rutgers campuses: Rutgers Newark and Rutgers Camden Law Schools, the Office of the Associate Vice President for Academic and Public Partnerships in the Arts and Humanities, the Center for Migration and the Global City – Newark, as well as the Bonner Foundation, the New Jersey Chapter of the American Immigration Lawyers Association, and Jewish Family and Vocational Services. Thanks to a partnership with the Institute for Professional Education at Rutgers Law-Newark, attorneys who train and volunteer at Citizenship Rutgers events can now receive Continuing Legal Education credit for their time.

CR's reach has been considerable: This year approximately 450 LPRs received assistance -- roughly 275 in New Brunswick, 55 in Camden, and 125 in Newark. A key component of the project's success has been the energy and competence of CR's volunteers.



Ron Chen, vice dean at Rutgers-Newark Law School, joined volunteers helping immigrants apply for naturalization through Citizenship Rutgers.

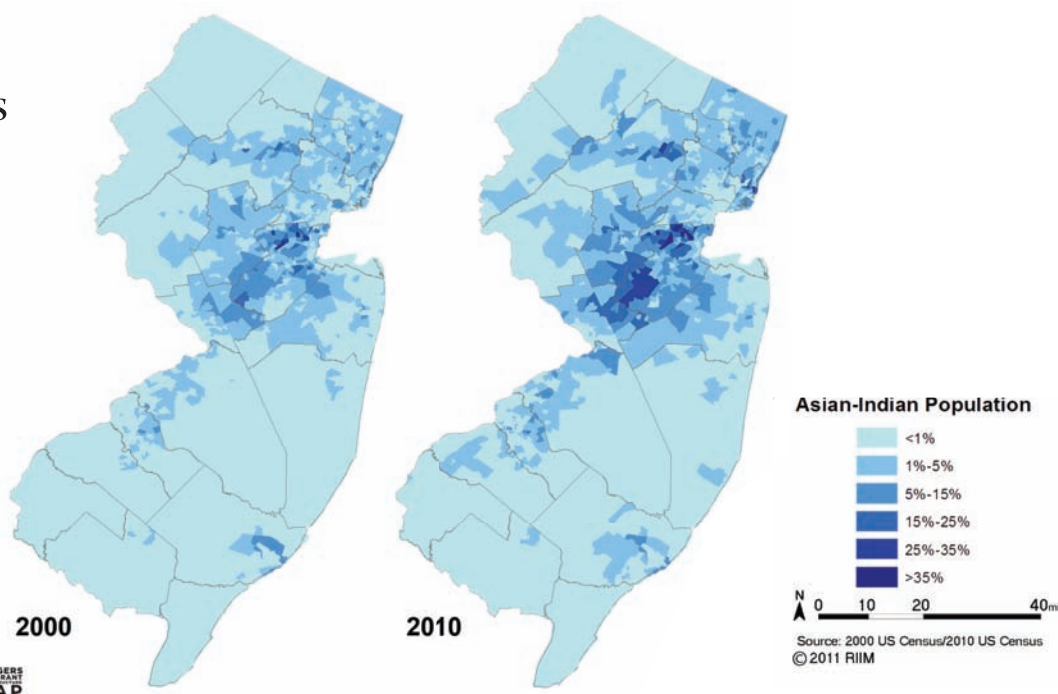
Alumni, students, faculty, staff, friends and neighbors make up a civically inspired, multilingual, multiethnic cadre from across the state, working toward a shared vision of immigrant integration.

This year, EPID also organized the first-ever naturalization ceremony held at Rutgers. On November 15, 2011, 34 candidates from 17 countries and five continents gathered at the Eagleton Institute to pledge allegiance to the United States. They ranged in age from 20 to 68 and hailed from seventeen nations including Pakistan, Poland, India, Italy, Nepal, Nigeria, Egypt and El Salvador.

With support from Rutgers University and other partners, CR plans to build on this momentum in 2012-2013. Outreach to governmental entities and community-based organizations will expand partnerships and bring the work to more communities. CR is seeking additional outside support as it plans a full schedule of application assistance events.

## Rutgers Immigrant Infrastructure Maps

**10 YEAR COMPARISON OF  
ASIAN-INDIAN POPULATIONS  
(US and Foreign Born)**



## EAGLETON CENTER FOR

## Public Interest Polling/Rutgers-Eagleton Poll



Students conduct surveys from ECIPI's in-house call center.

**ENTERING ITS FIFTH DECADE, THE** Eagleton Center for Public Interest Polling (ECPIP) is one of the oldest state-focused academic survey organizations in the country. It is probably best known for the Rutgers-Eagleton Poll, often referred to as “the Poll,” which has tracked the ups and downs of politics, policy, and personalities across New Jersey since the Center was established in 1971. ECPIP also works on survey projects for a range of clients, including faculty, graduate students, and non-profit organizations. ECPIP is directed by David Redlawsk, professor of political science, who works with a team that includes graduate and undergraduate students to produce research and reports.

Over the past year, the Poll issued 35 separate press releases on survey results, all of which can be viewed online at [eagleton-poll.rutgers.edu](http://eagleton-poll.rutgers.edu). Those interested in more depth can also examine the online data archive, which goes back to Eagleton's very first poll in Fall 1971.

Among the important New Jersey issues tracked by the Poll during 2011-2012 were the increasing support for legalizing same-

sex marriage in the state, the continuing desire for tax cuts as proposed by both Governor Chris Christie and the Democrats who control the legislature, and the ups and downs of both Gov. Christie and President Obama's support in the state. More playfully, one survey also found that Garden Staters prefer Jersey tomatoes over Jersey corn.

Professor Redlawsk continued to provide in-depth commentary on polling and public issues via the Poll's blog at [eagletonpollblog.wordpress.com](http://eagletonpollblog.wordpress.com); the Poll is also on Facebook and Twitter. Numerous media and blogging outlets at the local, state, and national level covered results of Eagleton's polls over the year. Redlawsk appeared on local TV and radio, as well as on international outlets including ABC Radio Australia and the BBC Online.

The past year has seen the continuation of the New Brunswick Community Survey, an ECPIP project on behalf of New Brunswick Tomorrow since 1976. Over 36 years, the survey has documented continuities and changes in our host community, building a dataset of both historical and contemporary value.

## Now and Then

During the past year, the Poll dug up some “greatest hits” and asked the same questions again to see what has changed. Among the findings:

### ■ JOBS, THE ECONOMY, AND TAXES:

In 1971, the first year of the Poll, only 12% named economic issues as most important, but in 2011 that number tripled to 37%. High taxes were the number two issue in 1971 (after crime and drugs). Over the ensuing forty years, taxes have always been either first or second for New Jerseyans.

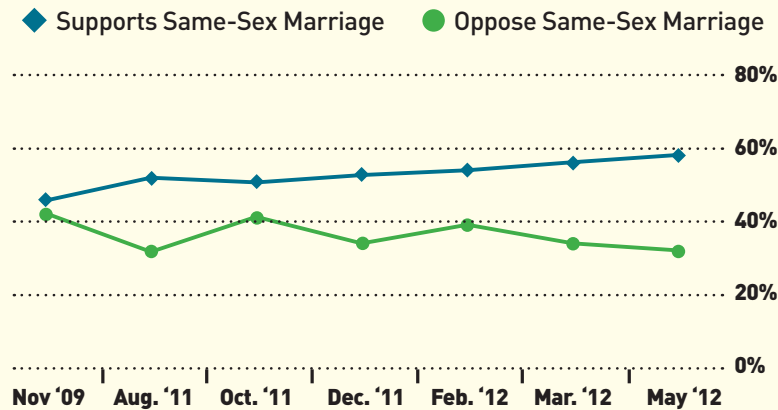
### ■ MARIJUANA DECRIMINALIZATION:

New Jerseyans have become more supportive of decriminalizing marijuana over the past 40 years. In 1972, 34% supported eliminating penalties for possession of small amounts. In November 2011, 55% were in favor. Also in 2011, 86% supported the availability of medical marijuana.



## New Jersey Attitudes on Same-Sex Marriage

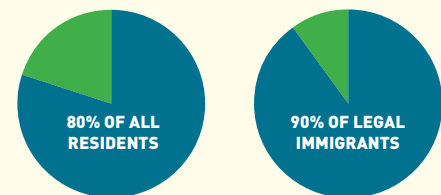
In recent years, the Poll has asked New Jerseyans about their views on same-sex marriage. The level of support has climbed and the level of opposition has dropped; a majority in the Garden State now support the idea.



## Most New Jerseyans Support Dream Act

A June 2012 Rutgers-Eagleton Poll finds that 80% of all New Jerseyans support the key provisions of the proposed DREAM Act, which would give young undocumented immigrants legal status. Support is even stronger among legal immigrants, with 90% in favor. This support cuts across typical demographic divides, so that even typical opponents of immigration express significant support.

### NJ Support for Provisions of the DREAM Act



### WORKSHOP IN

## American Politics

### THE EAGLETON WORKSHOP IN

American Politics features research that advances the study and practice of American politics. Professor Kira Sanbonmatsu organized three sessions during the spring semester that brought together scholars and practitioners from the Institute and the Rutgers Department of Political Science over lunch at Eagleton to share scholarly work in progress.

### Running with Strollers: The Impact of Family Life on Political Ambition

**BRITTANY STALSBURG**

*Ph.D. Candidate, Political Science*

*Discussant: Heather James, Graduate Student, Political Science*

Stalsburg examined the complex ways that gender, parenthood, and marital status shape state legislators' interest in seeking higher office. Among her conclusions were that women legislators were less likely than men to have young children and that women with young children were less ambitious than men with young children.

### The Failure of Modern American Institutions to Constrain Political Ambition

**PROFESSOR GERALD M. POMPER (EMERITUS)**

*Eagleton Institute of Politics*

**PROFESSOR MARC D. WEINER**

*Bloustein School*

*Discussant: Mark Major, Ph.D. Candidate, Political Science*

Professors Pomper and Weiner assessed the extent of partisan polarization in national politics today, its damaging effects, and the prospects for change. They concluded that the system of checks and balances is failing, leading to an erosion of democratic accountability.

### Changing Times: Political Advertising and Information Seeking in an Era of Viewer Choice

**PROFESSOR RICHARD LAU**

*Department of Political Science (Coauthored with John G. Geer, Vanderbilt University, and Lynn Vavreck, UCLA)*

*Discussant: John Ward, Graduate Student, Political Science*

Professor Lau presented a paper written with Professors Geer and Vavreck that used an experiment to simulate the role of political advertising in the new information environment. Comparing exposure to political advertisements in battleground and non-battleground states, the authors found that voters in non-battleground states were more likely to seek out information about the presidential candidates.

# Youth Political Participation Program

**ENCOURAGING AND PREPARING YOUNG** people to be informed and active participants in politics and government has long been an important challenge. Whether they choose to vote as adults and occasionally advocate on behalf of specific issues, or become more active and perhaps consider work in government or even running for office as part of their career, it is clear that the essential educational underpinnings of an engaged citizenry can be provided most effectively if they begin early and are carefully designed and regularly evaluated.

Under the direction of Dr. Elizabeth C. Matto, assistant research professor, Eagleton's Youth Political Participation Program (YPPP) supports political engagement through three stages: as high school students learn to be citizens; as college students and young people hone and begin to exercise their political skills; and as young adults seek public office and serve as elected leaders.

## THE HIGH SCHOOL COMPONENT: RU READY™

Piloted in 2007, RU Ready™ is a unique civic education initiative designed to provide high schools students with the tools and encouragement to engage in the political process. In its fifth year in New Brunswick High School, RU Ready™ was

offered in all sections of U.S. History I in collaboration with the social studies department, providing civic learning experiences to complement the curriculum. A central role is played by Rutgers students, who work directly with the high school students and administer the interactive sessions.

The program included in-class workshops with group discussions, simula-

tions, debates and role-playing exercises as students learned techniques used to influence legislative and electoral processes. The program culminated at the end of the academic year with a conference that brought many of the high school students to Eagleton for a day that included a keynote address by the vice president of the New Brunswick City Council, discussions



At a Fall 2011 Pizza and Politics program, students discussed upcoming New Jersey legislative elections with Rick Thigpen, vice president of state government affairs, PSEG; Pete McDonough, Rutgers vice president for public affairs; and Amy Denholtz, associate research analyst, NJ Office of Legislative Services.



Undergraduates Zain Haq and Shadi Moussavi joined YPPP director Elizabeth Matto to present results of Rutgers student focus groups



about leadership and political involvement, and activities such as the creation of a public service announcement encouraging political participation.

During 2012-2013, Eagleton plans to expand the program to provide civic learning opportunities to middle school students. The program will also seek to launch the RU Ready™ model at schools in other communities.

#### THE COLLEGE COMPONENT: RU VOTING™

The Eagleton Institute's RU Voting™ project is the resource Rutgers students, administrators, and faculty rely upon for voter registration and Election Day information. This year, the program continued to play a visible role on campus, mobilizing students to participate in the 2011 elections through the RU Voting™ website, voter registration drives on all four Rutgers campuses, and advertisements in the *Daily Targum*.

To prepare students for the election, RU Voting™ launched a *Pizza and Politics* series with a discussion among students and several Eagleton alumni and Visiting Associates about why students should care about the New Jersey state election. The program also brought students to the Institute for a *Popcorn and Politics* series of screenings of two politically-themed movies, *All the President's Men* and *The Ides of March*.

YPPP also continued its longitudinal research on civic and political engagement of Rutgers students. Working with undergraduate researchers Zain Haq, Connor Monteferrat, and Shadi Mousavi, Matto and the RU Voting Research Group conducted a series of focus groups of Rutgers students and analyzed existing national survey research to enhance understanding of the key attitudes of young people toward political participation. The research team presented its findings to an audience of administrators, faculty, and students in the spring.

In addition, Eagleton continued to network with scholars and practitioners around the country who share an interest in youth



RU Voting students registered voters on the College Avenue Campus on Constitution Day.

political engagement. In the spring, Matto and Eagleton students Deanna McBride and Amanda Kain participated in the National Campaign conference at Harvard University's Institute of Politics. McBride and Eagleton student Felise Ortiz represented YPPP at the Pathways to Civility Conference at Allegheny College.

#### THE YOUNG ADULT COMPONENT: YOUNG ELECTED LEADERS PROJECT

The Young Elected Leaders Project (YELP), developed at Eagleton in 2003, led to groundbreaking research that shed light on a relatively unexamined subject area: officeholders under the age of 35. At that time, more than half of the nation's top leaders in elective office had begun their public careers before age 35.

As the Millennial Generation begins to hold public office, Eagleton is taking steps to update this work by studying the backgrounds and attitudes of the young people who are choosing to run for political office today and comparing them with the group of young elected leaders studied a decade ago. To begin this next chapter, Eagleton gathered five of New Jersey's young elected leaders – three mayors and two council members ranging in age from 27 to 39 – to interact with Rutgers students, share their experiences and insights, and offer advice to students thinking of running for office.

## State House Express



#### IN ITS EIGHTH YEAR, THE STATE HOUSE

Express program continued to provide small grants enabling social studies teachers to take their students to Trenton for guided tours of New Jersey's State House and to participate in exercises illuminating the role of the legislature in American representative democracy. Funded by the New Jersey legislature, the program served 2,133 students from 29 high schools and 25 middle schools this year. Eagleton administers State House Express in collaboration with the Office of Legislative Services.

#### From a high school teacher:

We had a fantastic trip to the State House. We had a tour, and as we went through the first floor, Mayor Cory Booker and Governor Chris Christie came out and said "Hi" to our students! It was thrilling.

#### From a middle school teacher:

I just wanted to thank the Eagleton Institute for the opportunity for my seventh grade class to visit the State House. We had a fantastic time. My students enjoyed learning how to make a bill and debating the various reasons why it should or shouldn't become a law. They also loved the tour. The building is fascinating.

## Clifford Case Professorship: The Honorable Lee Hamilton

Former Congressman Lee Hamilton of Indiana, vice chairman of the 9/11 Commission and co-chair of the Iraq Study Group, served as the 2011-2012 Clifford P. Case Professor of Public Affairs. Hamilton gave public lectures on the New Brunswick and Newark campuses about *The U.S. Role in the World After 9/11, Afghanistan and Iraq*. He also spoke to Eagleton students about the strengths and weaknesses of Congress as an institution during a small session led by Professor Ross Baker. Former New Jersey Governor Tom Kean, chairman of the 9/11 Commission, introduced Hamilton at the New Brunswick public lecture and appeared with him on the public television program *Due Process*. Hamilton highlighted central global policy realities and challenges, but indicated that the greatest threats arise from economic and politic dysfunction at home.



### LEWITT LECTURE

## One Mind for Research: The Politics of Advancing Brain Health Research

Former Congressman Patrick Kennedy delivered the 2012 Albert W. Lewitt Lecture, addressing what he believes is the next frontier for scientific research: understanding the human brain or “inner space.” Kennedy is co-founder and co-chairman of One Mind for Research, formed in 2011 to eliminate the stigmas around brain diseases and target public policy and private resources toward creating multi-disciplinary research that transforms the understanding and treatment of brain diseases. New Jersey Congressman Frank Pallone introduced his former congressional colleague.

## Family of Freedom: Presidents and African Americans in the White House

Kenneth T. Walsh, chief White House correspondent for *U.S. News & World Report* and author of *Family of Freedom: Presidents and African Americans in the White House*, spoke about the complex relationships between U.S. chief executives and the African Americans who have been an integral part of the White House from the presidency of Abraham Lincoln through the election of President Barack Obama. Walsh, a Rutgers alumnus, is one of the longest serving White House correspondents in history and is the former president of the White House Correspondents' Association.





## HOLLAND LECTURE

## Ethics, Law, and Government: Drawing the Right Lessons from Watergate

**John W. Dean**, legal counsel to President Richard Nixon, was the 2011-12 lecturer for the Arthur J. Holland Program on Ethics in Government. Dean recounted stories from the Nixon White House before and during the Watergate scandal. He described the difficult dilemma he faced as a young White House staffer deciding whether to leave and blow the whistle on the administration, knowing that it would end his career in government. He also recalled colorful stories about Nixon and his senior staff. The 2012 class of Eagleton Undergraduate Associates attended the lecture as part of their seminar.



## Humor and Politics: How to Write Jokes When the News is Ridiculous

**Elliott Kalan**, a writer for *The Daily Show with Jon Stewart*, visited Rutgers for a conversation with Institute director Ruth B. Mandel exploring the intersection of humor and politics. Kalan spoke about how the show is written – the types of jokes that are in bounds or off limits. He noted that hypocrisy makes the best material for humor, giving examples of favorite show segments. Kalan also answered questions and gave students in the audience career advice. He closed with an Andy Rooney-inspired monologue asking what “Eagleton” means and highlighting the humor in names and naming.

## Women in the World

**Kakenya Ntaiya**, president and founder of the Kakenya Center for Excellence, the first primary girls’ boarding school in the Transmara district of Kenya, was the featured guest in a conversation with journalist **Louise Roug** at Eagleton, sponsored by CAWP and presented under the auspices of the Women in the World Foundation and *Newsweek-Daily Beast* as part of their new initiative, Women in the World on Campus. As a young Maasai girl, Ntaiya overcame many barriers to pursue her education, eventually earning a PhD from the University of Pittsburgh in 2011. Now a recognized trailblazer and advocate for women’s and girls’ education and health, she travels the world from her Nairobi base, speaking out against female genital mutilation and child marriage with the aim of giving other Maasai girls access to education, self-realization, and leadership.



## THE MORNING AFTER

## The NJ Legislative Elections: Results and Implications

Eagleton Institute associate director **John Weingart** moderated the now-traditional post-election panel discussion, this time featuring panelists **Angela Delli Santi**, NJ State House reporter for The Associated Press; **Joan Quigley**, then-NJ State Assemblywoman; **Charles Stile**, political columnist for The Record of Bergen County; and **Tom Wilson**, partner, Kaufman Zita Group and 2004-09 chair of the NJ Republican State Committee. Panelists assessed the impact of new legislative districts and looked ahead to upcoming elections.



## 2012 Political Outlook

**Charlie Cook**, editor and publisher of *The Cook Political Report*, dissected the current political atmosphere and the electoral and policy outlook for 2012. The lecture was held in conjunction with an American government course taught by Eagleton Assistant Research Professor David Andersen, bringing together students with faculty, staff and community members for a timely and information-packed analysis of election year politics.



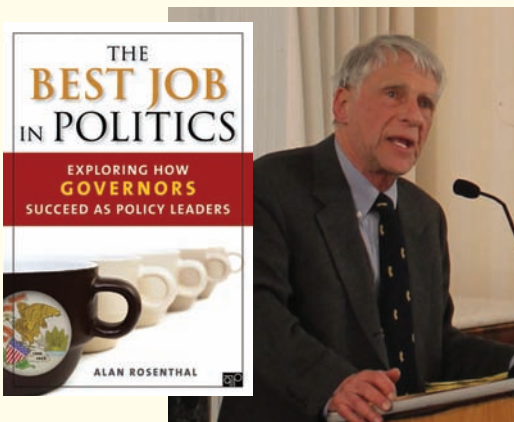
## The Future of Immigrant America

**Congresswoman Yvette D. Clarke** of New York

spoke about the urgency of enacting comprehensive reforms to fix our dysfunctional immigration system. She reminded her audience of the invaluable contributions of immigrants to American life and the importance of recognizing the nation's diversity as policy is shaped.

## Ground Wars: Personalized Communication in Political Campaigns

**Rasmus Nielsen**, research fellow at the University of Oxford and assistant professor at the University of Denmark, talked about his recent book, *Ground Wars: Personalized Communication in Political Campaigns*, an ethnographic portrait of the 2008 Congressional campaigns of New Jersey Democrat Linda Stender and Connecticut Congressman Jim Himes. Nielsen described how campaigns rely on teams of young staffers, volunteers, and paid part-timers to win the "ground war" through personal contacts with voters.



## The Best Job in Politics: Exploring How Governors Succeed as Policy Leaders

**Professor Alan Rosenthal**, an Eagleton faculty member and former Institute director, spoke about his recent book, *The Best Job in Politics: Exploring How Governors Succeed as Policy Leaders*. Rosenthal discussed why he chose to shift his focus from state legislatures to the state executive and why some governors outdo others at leveraging the institutional advantages of the office as they seek to shape public policymaking from mobilization to governance.



## The Last Great Senate: Courage and Statesmanship in Times of Crisis

Ira Shapiro discussed his recent book, *The Last Great Senate: Courage and Statesmanship in Times of Crisis*, and offered a perspective on the current United States Senate. In his book, Shapiro argues that for nearly 20 years, from 1963 through 1980, the Senate provided ballast, gravitas, and bipartisan leadership for America during a turbulent time of war, assignation, political scandal, violence, and civil unrest. Shapiro spent 12 years, including much of the period covered in his book, working for several Democratic senators.



## Millennial Momentum: How a New Generation is Remaking America

Morley Winograd and Michael D. Hais, authors of *Millennial Momentum: How a New Generation is Remaking America*, presented their recent research about how the Millennial generation (born 1982-2003) is America's newest "civic generation," en route to change the way the country lives and learns, votes and governs, works and plays. Winograd and Hais noted that Millennials are the largest and most diverse generation in American history, distinctive for their optimism, community focus, and interest in new institutions and social media. civic engagement.

### THE MORNING AFTER

## The NJ Primary, Wisconsin Recall and Other 2012 Campaigns: Possible Results and Potential Implications

Presidential politics were front and center as the Institute closed out the year with a second Morning After program, this one following New Jersey's primary elections. Eagleton's associate director **John Weingart** moderated the panel discussion featuring **Steve Kornacki**, MSNBC political analyst; **Charles Stile**, political columnist for *The Record of Bergen County*; **Candace Straight**, co-chair of the Republican Majority for Choice and board member for Montpelier Holdings, Neuberger Fund and others; **Rick Thigpen** (not shown), vice president for state governmental affairs for PSEG, former NJ Democratic State Committee director, and former district director for Congressman Donald Payne.



## Rutgers Day

The Institute participated in the university-wide celebration that drew approximately 75,000 visitors to the New Brunswick-Piscataway campus. Eagleton's exhibit featured a custom "Toss Your Hat in the Ring" political beanbag-toss game, voter registration, information about Eagleton's programs, and a photo-op with cardboard representations of President Barack Obama and former Governor and GOP presidential candidate Mitt Romney.

**T**HE EAGLETON INSTITUTE OF POLITICS THANKS THE FOLLOWING corporations, foundations, organizations and individuals for their generous contributions to the Institute's centers and programs during the 2011-2012 fiscal year:

**\$50,000 AND ABOVE**

The Fund for New Jersey  
Political Parity Program  
of the Hunt Alternatives Fund  
W.K. Kellogg Foundation  
The Blanche and Irving Laurie Foundation  
National Science Foundation  
New Brunswick Tomorrow  
Partnership for Connected Illinois

**\$20,000 TO \$49,999**

Hess Foundation, Inc.  
Partnership for a Drug Free NJ

**\$5,000 TO \$19,999**

Astellas USA Foundation  
AT&T  
The Barbara Lee Family Foundation  
Clara Maass Medical Center  
Elsie H. Hillman Foundation  
The Gambaccini Family  
Jack and Joan Hall  
Hellman Family Foundation  
John and Ann Holt  
Theresa Lynn McDonald  
Miller-Worley Foundation on behalf  
of Leslie Anne Miller and Richard B. Worley  
Edith D. Neimark  
Nestle USA, Inc.  
Nextera Energy Foundation  
PSEG Company Foundation  
Public Strategies Impact, L.L.C.  
Rachel's Network, Inc.  
STV Engineers/Architects/Planners  
The Grove Foundation  
The Carstens Family Fund at  
The San Diego Foundation  
United Way of Central New Jersey  
Verizon New Jersey

**\$1,000 TO \$4,999**

Catherine Sweeney Arnone  
Atlantic Health System  
Lillian C. Borroni  
Lewis H. Butler  
Lyle B. Dennis  
Leonard J. DiGiacomo, Esq.  
Mortimer L. Downey  
Tom Downs  
Election Fund of Weinberg for Senate  
Deborah Wathen Finn  
Len Fishman  
Friends of Kathleen Rice  
Hazel F. Gluck  
Patricia A.K. Godchaux  
Rhondra L. Grant  
Eva K. Grove  
Martha E. Hackett  
Alfred H. Harf  
Judith A. Hasko  
Nancy L. Herman  
Christopher Holland  
Jimmy D. Jackson  
David W. Johnson  
Sheryl Klein  
Arthur and Carol Lerner  
Charles J. Maikish  
Susan E. Massart  
Gilda M. Morales  
Nestle USA, Inc.  
New Jersey Education Association  
M. Michel Orban  
Marian S. Pillsbury  
Jerome C. Premo  
Edna R. Ranck  
Arlee T. Reno  
Howard Roberts  
Rose Community Foundation  
on behalf of Lynda Goldstein  
Amy Rosen  
Richard R. Sarles  
SB Women's Political Committee  
Silverleaf Foundation  
on behalf of Mayree Clark  
Linda M. Spock  
Candace L. Straight  
Stuart and Martha Tell  
Gina Torres  
Preeva A. Tramiel  
Judith B. Wagner  
James Weinstein  
Women's Foundation of Minnesota  
on behalf of Kathryn A. Finney-Wright  
E. Neal Zimmermann

**UP TO \$999**

Giselle S. Galper  
Cort A. Adelman  
Dinesh C. Agrawal  
Tracey Alexander  
Alexandra Allman Van Zee  
Phyllis Alroy  
Robin Altman  
Natalae N. Anderson  
Art of Noise, LLC on behalf of Jodi Ticknor  
Jennifer A. Atkins  
Lee Aubry  
Leona E. Avey-Humphries  
Minoo Ayat  
Jennifer Crea Aydjian  
Ellen F. Ayoub  
Polly Baca  
Amy Baer  
Julius O. Bailey  
Linda Barter  
Anne M. Bartnett  
Carola M. Barton  
Jane T. Baumann  
Bryce Becker  
Nancy H. Becker  
Dorothy Bedford  
Ruth G. Bedford  
Edward and Vivian Beenstock  
Jennifer M. Belcher  
James Bellis, Jr.  
Harris A. Berman  
Elizabeth R. Besen  
Adam G. Bierman  
Mary W. Blanchard  
Bloom, Hergott, Deimer,  
Rosenthal, LaViolette  
Bruce Blumenthal  
Kimberly J. Bogdan  
Sandra Boissier  
Phillip Bokovoy  
Alison Boldero  
Halley Bonoma on behalf of Erin Sarofsky  
Darlene D. Borromeo  
Bovin Family Foundation  
Valerie J. Bradley  
Robert K. Braulik  
Leyland H. Brenner  
Patricia Breslin  
Naomi Mueller Bressler  
Maria Dante Brown  
Michael I. Brown  
Steven C. Bruchey  
Katherine Brumage  
Beverly B. Bryant  
Judith Bullitt  
Anne Danzey Burnham  
Carl and Ruth Ann Burns  
Michael T. Burns  
Modia J. Butler  
Anne P. Canby  
Flora M. Castillo  
Marguerite Chandler  
Devavrat A. Chaudhary  
Judy O'Brien Chavis  
Cecilia H. Cheng  
Randy Cherry  
Judith C. Chirlin  
Randi Chmielewski  
Michelle L. Christison  
Cristina Clapp  
Janet E. Clark  
Ellen H. Clear  
Claudine Cmarada  
John J. Cohen  
Henry Alfred Coleman  
Linda F. Coleman  
Community Without Walls, Inc.  
Joanna Conte  
Melanie Cook  
Alison L. Cormack  
Delores Corona  
Nancy E. Cotton  
Phyllis O. Cotton  
Coulson Campaign Committee  
Ruth B. Cowan  
Sam Crane  
Dorothy J. Cranshaw  
Paul W. Critchlow  
Loredana Cromarty  
Betsy M. Crone  
Kathleen E. Crotty  
Joan A. Crowley  
Stephanie Cubba  
Madeline M. Dale  
Joel H. Davidson  
Donna G. Davis  
Deborah Dean  
Bianca Dellepiane  
Nicholas A. DeLuca  
Amy Denholtz  
George Deriso  
Harriet E. Derman  
Mary Kelleher Di Martino  
Michelle P. DiMartino  
Marc L. Donatiello  
Melanie S. Donnelly  
Joseph V. Doria, Jr.  
Michael J. Duffy  
Tiffany R. Dufu  
Shefali Razdan Duggal  
Karen Dunne  
Julie Durk  
Bettina Duval  
Matthew L. Edelman  
Educational Testing Service  
on behalf of Mr. Steven C. Bruchey  
Debra Ehrman  
Trudy Eiron  
Wendy Elkin  
Rex T. Elliott  
Lauren Embrey  
Enterprising and Professional  
Women New York  
Bonnie Ettinger  
William F. Faherty, Jr.  
Zulima V. Farber  
David and Laurie Farrell  
Tara M. Fass

Bruce Feld  
Janet M. Fenwick  
Happy Fernandez  
Rita Ferraro  
Lynn D. Ferrell  
Paul A. Schmidhauser  
Roxanne E. Parker  
Larry Filler  
Deborah Wathen Finn  
June S. Fischer  
Jessica L. Fleischmann  
Catherine Crystal Foster  
Roberta W. Francis  
Linda G. Frank  
Joan Freedman  
Friends of Susan Adams  
Jill Gaffin  
Barbara K. Gannon  
Kathy Garmezzy  
Susan Garner  
Kathleen Elizabeth Garretson  
Leslie Garvin  
Joyce Gelb  
Irwin Gertzog  
Debbie V. Gervasio  
Karen Getman  
Frank Gibson on behalf  
of Ms. Amy Isler Gibson  
Linda G. Gochfeld  
Clarisa Gonzalez-Lenahan  
Kelly Goode  
Joanne Goodwin  
Gail Gordon  
Kristen Marie Graf  
Rhondra L. Grant  
Richard H. Gregg  
Elizabeth A. Grenier  
Martha Griffin  
Melanie S. Griffin  
Patricia M. Griffith  
Carole Groom  
Muriel Haber  
Mark E. Hall  
Thomas J. Hall  
Margaret J. Hallock  
William J. Hamilton, Jr.  
Jacqueline W. Harwood  
Harvey and Felice Hauptman  
Catherine M. Hawn and Robert J. Fitzpatrick  
Theresa A. Hays-Horner  
Adrien W. Helm  
Lisa Henson  
Diane N. Hickey  
Mary Ellen Higgins  
Thomas S. Higgins  
Hildy Gottlieb Hill  
Miriam S. Hinds  
Debbie Hines  
Susan Mayer Hirsch  
Cynthia Ann Hoenes-Saindon  
Elizabeth A. Holland  
Lisa Honig  
Judith L. Hopkinson  
Candice P. Howard  
Fred Howlett  
Jean Huang  
Marianne Hudson  
Jillian Hudspeth  
Irwin Hundert  
Jocelyn Buck Hunn  
Mark Iaconelli, Jr.  
John W. Indyk  
Maureen B. Isaacson  
Dina Jacobson  
Susannah Jeffers  
Tina Jen  
Jill E. Jensen  
Anita M. Johnson



Laniece Jones  
Hilary Cecil Jordan  
Susan Jordan  
Romielyn B. Joson  
Kahn Brothers, LLC on behalf  
of Phyllis and Donald Kahn  
Emily A. Kaller  
Grace Kaminkowitz  
Lola F. Kamp  
Joan Karlin  
Scott D. Karol  
Kathleen A. Karpilow  
Kathy Dahlkemper for Congress  
Ilene Sakheim Katz  
Laurie Kavanagh  
Victoria C. Kelly  
Marybeth Kelman  
Shirin Kia  
Greta S. Kiernan  
Susan C. Kirk  
Katherine E. Kleeman  
Barbara Klein  
Janet Kluczynski  
Mary S. Knowles  
Jan M. Koehn-Selman  
Elisa Koff-Ginsborg  
Laura Koffsky  
Ashley Koning  
Roger A. Kosson  
Lesley T. Kowalski  
Judith H. Kramer  
Bernis M. Kretchmar  
Laurie Kretchmar  
Michael Kretchmar  
Jennifer A. Krumins  
Sarah La Due on behalf  
of Catherine Moore  
Miriam Walsh Lampen  
Nancy J. Lanham  
Sandra H. Lanman  
Michael C. Laracy  
Laurenti Consultants, LLC  
Mary A. LaVigne-Butler  
Law Offices of Susan B. Share  
Timothy P. Law  
Jesse Lazarus  
Susan Leal  
Steven M. Leder  
Susan S. Lederman  
Maurice DuPont Lee, Jr.  
Diane Legreide  
Kathleen A. Lehr  
Marcos Leiderman  
Carole Leland  
Christine Lenart  
Barbara D. Lenoble  
Lawrence D. Levit  
Kenneth S. Levy  
John M. Leyman  
Deborah Liebling  
Joanne M. Linderorth  
Laura A. Liswood  
Kate E. Lowry  
Kevin J. Lubin  
Anne E. Lucke  
Loretta M. Lynch  
Julia MacDermott  
Gerald J.R. Macheke  
Blair B. MacInnes  
Geraldine J. MacKenzie  
Rita Magidson-Haft  
Anna Mahoney  
Audrey Anne Maiese  
Carol Malnick  
Ruth B. Mandel  
Juliana Mardones  
Susanna Margolis  
Mary Lou Marzian

Shelly Masur  
Sandra L. Matsen  
Christine Mattsson  
Edward J. McBride  
Arva Parks McCabe  
Lillah McCarthy  
Mary T. McCullough  
Kyra McGrath  
Thomas McKay III  
Scott L. McLean  
Patrick J. McNamara  
Susan O. McNamee  
Peggy Lee McNutt  
Carolyn S. Mealing  
Carol A. S. Meier  
Tanya M. Melich  
Adalina Merello  
Evelyn Messinger  
Gail S. Meyers  
Elinor Miller  
Phyllis E. Miller  
Melissa A. Millsaps  
Shelley Jacobs Mintz  
Gwendolyn A. Mitchell  
Patricia Morton  
Mary Lynn Moser  
Mount St. Mary's College  
William F. Muhlenfeld  
Evelyn Carroll Murphy  
W. Michael Murphy, Jr.  
Catherine A. Murray  
Michelle L. Nadow  
Christine A. Naegle  
Lauren M. Nathan-LaRusso  
Kathy Neal  
Sue Nemeth  
Jennifer N. Nguyen  
Naomi Fuchs Nierenberg  
Patrick T. O'Connell  
Jayne O'Connor  
Yetunde Odugbesan  
Maureen B. Ogden  
David B. Ogle  
Nancy O'Malley  
Nedra Oren  
Carol R. Orton  
Loretta A. O'Sullivan  
Joseph Palazzolo  
Margaret G. Palmieri  
Patricia M. Papper  
Patricia Todd Campaign Account  
Judith A. Patrick  
Ann Payson  
Judith M. Pepper  
Joy N. Picus  
Jeanette M. Pilak  
Marnie Pinsker  
Mary F. Platt  
Dorothy Podhurst  
Deborah T. Poritz  
David B. Price  
Joan Shaffran Prince  
Kimberly L. Quinones  
Diane R. Quinton  
R & L Donner Trust  
Teri Raffel  
Elizabeth L. Randall  
Marjorie Randolph  
Melinda Raso-Kirstein  
Peter J. Rathjen  
Judith G. Rattner  
Nancy Redford  
David P. Redlawsk  
Ingrid W. Reed  
Charles L. Renda  
Evangelia L. Repousis  
Kimberly S. Ricketts  
Richard Roberts

Martin E. Robins  
Ada R. Robinson  
Wilfredo Rodriguez  
Theresa Rohr-Kirchgraber  
Dorothy P. Romaine  
Susan J. Rose  
Jan E. Rosenfeld and Michael T. Catania  
Helen K. Rosenthal  
Lisa Rosenthal  
Ilene R. Rosenzweig  
Ellen R. Roth  
Bernice Rudolph  
Debra Caywood Rukas  
Esther Rydell  
Mary Beth Salerno on behalf of Denise N. Kleis  
Sam & Sooky Goldman Family Foundation  
on behalf of Myra Lurie and David Goldman  
Kathryn M. Sandow  
Annette R. Santamaria  
on behalf of Lindsey Santamaria  
Deborah Santana  
Lynn C. Scheffey  
Eva B. Schlachter  
Ida Schmertz  
Jennifer Schneider  
Ginger Gold Schnitzer  
Daniel H. Schoenberg  
Anne M. Schowe  
James E. Schroeder

Beverly A. Scott  
Nell Scovell  
Eleanor Hanoka Seel  
Sydell P. Seiden  
SEL Group International Inc.  
Elizabeth Share  
Stephen A. Shaw  
Barry A. Sherman  
Rozalyn Sherman  
Elaine Helen Shovlin  
Kamala H. Shugar  
Jon J. Shure  
Sarit E. Siegel  
Leda Simonsen  
Jean M. Sinzdek  
Eric W. Sleeper  
Robert L. Smartt  
Kathleen Sohnfoster  
Angela M. Sousa  
Southwest Airlines  
Special Film Production, LLC  
Sandra Spence  
Roberta Steele  
Judith M. Stern  
Stewart R. Mott Foundation  
on behalf of Anne B. Zill  
Zachary J. Stewart  
Leslie Stiles  
Phyllis and Irwin S. Stoolmacher

*Donors continued on following page*

## THE LOUIS J. GAMBACCINI CIVIC ENGAGEMENT SERIES:

# Toward Better Citizenship

**T**HE LOUIS J. GAMBACCINI CIVIC Engagement Series was established this year through the visionary and generous support of colleagues, friends, and family of former New Jersey Transportation Commissioner Gambaccini to honor his outstanding legacy in public service. An admirer of the Athenian Oath, Gambaccini is known for his lifelong dedication to upholding the highest standards of civic responsibility and for inspiring others to leave communities better and more beautiful than they found them. This series was conceived and designed to promote civic engagement through an annual discussion of timely and enduring issues of great significance, with the objective of generating real civil discourse and action.

On May 11, 2012 Eagleton kicked off the series with its inaugural program, welcoming former Massachusetts Governor Michael S. Dukakis as the keynote speaker. Governor Dukakis, a champion of public transportation and for-



Former Massachusetts Governor Michael Dukakis visited with Lou Gambaccini before speaking at the inaugural program in the Louis J. Gambaccini Civic Engagement Series.

mer vice chairman of the Amtrak board, delivered an address about the current state of the nation's rail transportation system. Following his talk, comments were offered by: Brendan T. Byrne, Governor of New Jersey, 1974-1982, James J. Florio, Governor of New Jersey, 1990-1994, Elizabeth C. Matto, director, Eagleton Youth Political Participation Program, and John Weingart, associate director of the Eagleton Institute of Politics. Gambaccini provided closing remarks about the event and his vision for the future of the program.

Donors continued from previous page

Penny Stroud  
M. DeLois Strum  
Colin Summers on behalf  
of Ms. Nell Scovell  
Sandra Sutphen, Ph.D.  
Claire M. Syrett  
Laura Talmus  
Alison R. Taylor  
Holland V. Taylor  
Patricia Tercek  
The Election Fund of  
Thomas P. Giblin, Inc.  
The San Francisco Foundation  
on behalf of Ms. Anne Anderson  
The Ulin/Payson Living Trust  
on behalf of Ms. Ann Payson  
Lisa Theodoratus  
Tracy Thompson  
Lewis B. Thurston III  
Sarah Timberman  
Ellin Todd  
Jessica H. Tomalo  
Kathleen C. Torgersen  
Helen Torres  
Joanne L. Tosti-Vasey  
Laurie Trieger  
Edward P. Trzaska  
Caroline Van Alst

Christine Van Horn  
Susan C. Varga  
Vas Law, LLC  
Steven Vaughn  
Noemi Velaquez  
Christopher S. Wakeley  
Deborah L. Walsh  
Sharon L. Weiner  
Karen Weinstein  
Katherine G. Welch  
West 51st Street Productions  
Katharine Whipple  
Barbara J. Wilson  
Betty Wilson  
David Selkirk Wilson  
Eleanor Winslow  
Alison A. Winter  
Rachel S. Wolkowitz  
Connie O. Wong  
Dawn F. Wood  
Kim Marie Wozniak  
Peter and Shari Yeager  
Wilhelmena H. Yeldell  
Randall L. Young  
Adelaide S. Zagoren  
Jack L. Zatz, Esq.  
Jane A. Zimmy  
Joan Getaz Zumoff

#### ■ THANK YOU TO THESE COMPANIES FOR MATCHING GIFTS FROM OUR INDIVIDUAL DONORS:

AllianceBernstein, LP  
The Annie E. Casey Foundation, Inc.  
Chevron Corp.  
Johnson & Johnson Family of Companies

The Horizon Foundation of New Jersey  
Microsoft Giving Campaign  
Vanguard Charitable Endowment Program

#### ■ EAGLETON IS GRATEFUL TO THE GENEROUS DONORS WHO HAVE ESTABLISHED THE FOLLOWING SPECIAL PROGRAMS, AWARDS AND FUNDS:

Nancy Becker Award for Public Leadership  
Kathy Crotty Legislative Internship fund  
The Wells Phillips Eagleton and  
Florence Peshine Eagleton Fund  
The Julia Fishelson Internship Fund  
The Louis J. Gambaccini Civic Engagement Series  
Hazel Frank Gluck Award for Public Leadership  
Arthur J. Holland Program on  
Ethics in Government

John and Ann Holt Endowed Undergraduate  
Applied Research Fund in American Politics  
Charles and Inez Howell fund  
Phyllis Kornicker Legacy Fund  
Albert W. Lewitt Lecture  
Harold and Reba Martin Fellowships  
Barbara Boggs Sigmund Award  
Susan N. Wilson Legacy Fund

2012 | 2013

## Eagleton Visiting Associates

**RICHARD H. BAGGER**  
**BILL BARONI**  
**NANCY H. BECKER**  
**ROGER A. BODMAN**  
**B. THOMAS BYRNE, JR.**  
**MICHAEL F. CATANIA**  
**LOREDANA CROMARTY**  
**KATHLEEN E. CROTTY**  
**JOSEPH V. DORIA, JR.**  
**MICHAEL DUHAIME**

**GREGG M. EDWARDS**  
**ZULIMA V. FARBER**  
**DALE J. FLORIO**  
**DOUGLAS FORRESTER**  
**JOHN P. HALL**  
**DR. JOYCE WILSON HARLEY, ESQ.**  
**HAROLD L. HODES**  
**HEATHER HOWARD**  
**PATRICK KENNEDY**  
**JANE M. KENNY**

**GRETA KIERNAN**  
**HERBERT C. KLEIN**  
**AMY B. MANSUE**  
**MAGGIE MORAN**  
**MICHAEL MURPHY**  
**THOMAS M. O'NEILL**  
**INGRID W. REED**  
**RICHARD W. ROPER**  
**GINGER GOLD SCHNITZER**  
**SEEMA M. SINGH**

**ROBERT L. SMARTT**  
**CANDACE L. STRAIGHT**  
**RICHARD T. THIGPEN**  
**MICHELE TUCK-PONDER**  
**MELANIE L. WILLOUGHBY**  
**THOMAS R. WILSON**  
**RICHARD ZEOLI**

The Visiting Associates dinner is probably where I gained the most insight and valuable interactions with some of New Jersey's most accomplished political players and public servants, policy advisors and thinkers and lobbyists. Eagleton excels as a gateway between young, aspiring professionals with a penchant for public or political engagement and those who have had lives full of experience toward that end.

2011-12 EAGLETON FELLOW



Eagleton Fellows and Undergraduate Associates donned hard hats and construction vests for a unique behind-the-scenes tour of the World Trade Center memorial, museum and freedom tower site, arranged by Visiting Associate Bill Baroni.





Alumni from the Eagleton Fellows Class of 2011 and senior administrative assistant Sarah Kozak toasted the Institute with "Politics Matters" mugs at the Annual Alumni Get Together.

2011 | 2012

## Eagleton Alumni Committee

*Representing Eagleton Fellows and Undergraduate Associates*

### CORT ADELMAN

'07 Fellow

### BETH ADUBATO

'02 Fellow

### DAVID ANDERSEN

'10 Fellow

### JONATHAN ASH

'07 Fellow

### KATE BLAUVELT

'10 Fellow

### BRANDON BRICE

'08 Fellow

### TAMARA BRITT

'09 Fellow

### KIM CASE

'03 Undergraduate Associate/'07 Fellow\$

### OSATO CHITOU

'10 Fellow

### RANDI CHMIELEWSKI

'06 Undergraduate Associate

### ALEX COHEN

'11 Undergraduate Associate

### CAROL CRONHEIM

'93 Fellow

### PAUL CRUPI

'11 Fellow

### AMY DENHOLTZ

'07 Fellow \*

### BHAVINI DOSHI

'05 Undergraduate Associate

### TIA GAYNOR

'10 Fellow

### HANS GOFF

'08 Fellow

### DAVID GREENBLATT

'10 Fellow

### DANIEL GUTIERREZ

'08 Undergraduate Associate

### DAVID HARRIS

'69 Fellow

### JACK HARRIS

'88 Undergraduate Associate/'11 Fellow

### CHRISTOPHER HUGHES

'05 Undergraduate Associate

### STACEY LADD

'10 Undergraduate Associate

### CHRIS LENART

'05 Honorary Fellow

### JOHN LEYMAN

'01 Fellow

### KEVIN LUBIN

'10 Undergraduate Associate

### KATIE MURRAY

'11 Fellow

### ALISHA NICHOLS

'10 Undergraduate Associate

### YETUNDE ODUGBESAN

'11 Fellow

### MARITZA RODRIGUEZ

'11 Fellow

### WILFREDO RODRIGUEZ

'09 Fellow

### ARTYOM ROGOV

'10 Undergraduate Associate

### JORGE SANTOS

'04 Undergraduate Associate/'12 Fellow

### DARRYL SCIPIO

'07 Fellow

### NICOLE SCOTT-HARRIS

'10 Fellow^

### STEPHANIE STUDENT

'10 Undergraduate Associate+

### JACK ZATZ

'09 Fellow

\* Committee Chair

+ Committee Co-chair

^ Committee Secretary

\$ Committee Treasurer

2011 | 2012

## Eagleton Student Staff

### ■ Graduate Student Staff

#### SARA ANGEVINE

*Political Science*

#### JULIA FLAGG

*Sociology*

#### JORDAN GREENSTEIN

*Women's and Gender Studies*

#### AISHA HARDEN

*Political Science*

#### KATE HENRY

*Public Policy*

#### HEATHER JAMES

*Political Science*

#### MONA KLEINBERG

*Political Science*

#### ASHLEY KONING

*Political Science*

#### LAUREN MCKIM

*City and Regional Planning*

#### JOE REILLY

*Public Policy*

#### AMANDA ROBERTI

*Political Science*

#### CHARNEY ROBINSON

*Public Administration*

### ■ Undergraduate Student Staff

#### ZAID ABUHOURLAN

#### MEHVISH AMJAD

#### DAVID AZVOLINSKY

#### SHOSHANNAH BUXBAUM

#### KATHERINE CHANG

#### FRANCESCA CONTI

#### AMANDA DAVILA

#### PIERS DUFFELL

#### CHANTAL-ANNIK EZOUA

#### CARLY GABRIEL

#### EVA GROTE

#### ZAIN HAQ

#### AARON HYNDMAN

#### MARIA ILIADS

#### BRITNIQUE JORDAN

#### AMI KACHALIA

#### AMANDA KAIN

#### ABDUL REHMAN KHAN

#### AFSHAN KHAN

#### HARINI KIDAMBI

#### HAE JOON LEE

#### STEFAN MANCEVSKI

#### STACY MARTINEZ

#### DEANNA MCBRIDE

#### NOELLE MENDOZA

#### MEHREEN MIAN

#### SHIR MIRETSKY

#### CONNOR MONTFERRAT

#### SHADI MOUSAVI

#### RITA NEHME

#### MARIAM OLUSEKUN

#### FELISE ORTIZ

#### BRITTANY PERRY

#### JESSICA REMINGTON

#### JANE ROSENBLATT

#### PAIGE SCHILLING

#### ADITYA SINGH

#### PRIMUM SINGH

#### DANIELLE SPERO

#### VALERIE WEISS

#### JACK WEST

#### REBECCA WILLS

#### ANNA WU

# Eagleton Faculty and Staff

## RUTH B. MANDEL, PH.D.

Director, Eagleton Institute of Politics  
Board of Governors Professor of Politics  
Senior Scholar, CAWP

## JOHN WEINGART

Associate Director, Eagleton Institute of Politics

## Faculty and Staff

## DAVID ANDERSEN, PH.D.

Assistant Research Professor

## NANCY H. BECKER

Program Development Associate, CAG

## JENNIFER BOGNAR

Senior Development Specialist

## LUCY BARUCH

Director of Finance and Administration  
(through 12/11)

## SUSAN J. CARROLL, PH.D.

Senior Scholar, CAWP  
Professor, Department of Political Science

## RANDI CHMIELEWSKI

Coordinator, Public Programs and Special Projects

## BENJAMIN CLAPP

Media and Building Services Assistant

## KELLY DITTMAR, PH.D.

Assistant Research Professor

## KATHY KLEEMAN

Senior Communications Officer

## SARAH KOZAK

Senior Administrative Assistant

## ANASTASIA R. MANN, PH.D.

Assistant Research Professor, EPID  
(on leave 2012-13)

## ELIZABETH C. MATTO, PH.D.

Director, Youth Political Participation Program  
Assistant Research Professor

## HYACINTH MILLER

Research Associate, CAWP and EPID

## GLORIA MINOR

Secretarial Assistant

## GILDA MORALES

Project Manager, Information Services, CAWP

## SUSAN NEMETH

Public Relations Specialist, CAWP

## DEANNA-MARIE C. NORCROSS

Program Coordinator, CAWP

## SASHA PATTERSON, PH.D.

Program Manager, NEW Leadership™, CAWP

## LINDA PHILLIPS

Unit Computing Specialist

## GERALD M. POMPER, PH.D.

Board of Governors Professor of Political Science (Emeritus)

## DAVID P. REDLAWSK, PH.D.

Director, ECPIP  
Professor, Department of Political Science

## ALAN ROSENTHAL, PH.D.

Professor II of Public Policy

## KIRA SANBONMATSU, PH.D.

Senior Scholar, CAWP  
Professor, Department of Political Science

## JEAN SINZDAK

Director, Program for Women Public Officials, CAWP

## MICHAEL SOGA

Coordinator, Facilities and Events

## JESSICA THOMPSON

Administrative Assistant and Database Manager

## DEBBIE WALSH

Director, CAWP

## SHARI YEAGER

Business Manager (as of 1/12)

## YOLANDA ZRALY

Accounting Specialist

## CLIFF ZUKIN, PH.D.

Professor of Public Policy

## Adjunct Faculty and Research Associates

## DEBORAH BORIE-HOLTZ, PH.D.

Project Coordinator, ECPIP  
Instructor, Edward J. Bloustein School of Planning and Public Policy

## JOSEPH V. DORIA, JR., ED.D. (Adjunct)

## MICHAEL DUHAIME (Adjunct)

## MURRAY EDELMAN, PH.D.

Consulting Scholar

## JANICE R. FINE, PH.D.

Faculty Associate  
Associate Professor, School of Management and Labor Relations

## DAVID KARP, PH.D.

Faculty Associate (2011-12)  
Assistant Professor, Department of Journalism and Media Studies

## RICHARD LAU, PH.D.

Faculty Associate  
Professor, Department of Political Science

## BERTRAM LEVINE, PH.D.

Faculty Associate  
Assistant Instructor, Department of Political Science

## ANDREW MURPHY, PH.D.

Faculty Associate  
Associate Professor, Department of Political Science  
Director, Walt Whitman Center for the Culture and Politics of Democracy

## PETER J. MCDONOUGH, JR.

(Adjunct), Vice President Public Affairs

## MAGGIE M. MORAN (Adjunct)

## EPID Research Associates

## DAVID BENSMAN, PH.D.

Professor, School of Management and Labor Relations

## ULLA BERG, PH.D.

Assistant Professor, School of Arts and Sciences-Latino & Hispanic Caribbean Studies

## EVE BISKIND KLOTEN

Assistant Dean, School of Law-Camden

## LINDA BOSNIAK, PH.D.

Professor II, School of Law-Camden

## JAMES DEFILIPPIS, PH.D.

Associate Professor, Edward J. Bloustein School of Planning and Public Policy

## JOANNE GOTTESMAN, PH.D.

Clinical Associate Professor, School of Law-Camden

## PETER J. GUARNACCIA, PH.D.

Professor, School of Environmental and Biological Sciences

## KATHE NEWMAN, PH.D.

Associate Professor, Edward J. Bloustein School of Planning and Public Policy

## TIM RAPHAEL, PH.D.

Associate Professor, Faculty of Arts and Sciences Newark-Visual and Performing Arts

## ROBYN RODRIGUEZ, PH.D.

Assistant Professor, School of Arts and Sciences-Department of Sociology

## MARA SIDNEY, PH.D.

Associate Professor, Faculty of Arts and Sciences Newark-Political Science

## DAVID TULLOCH, PH.D.

Associate Professor, School of Environmental and Biological Sciences-Landscape Architecture

CAG – Center on the American Governor

CAWP – Center for American Women and Politics

ECPIP – Eagleton Center for Public Interest Polling

EPID – Eagleton Program on Immigration and Democracy



## EAGLETON INSTITUTE OF POLITICS

# Online

### EAGLETON INSTITUTE OF POLITICS

[eagleton.rutgers.edu](http://eagleton.rutgers.edu)  
[njvoterinfo.org](http://njvoterinfo.org)

### CENTER FOR AMERICAN WOMEN AND POLITICS

[cawp.rutgers.edu](http://cawp.rutgers.edu)

### CENTER ON THE AMERICAN GOVERNOR

[governors.rutgers.edu](http://governors.rutgers.edu)

### EAGLETON CENTER FOR PUBLIC INTEREST POLLING/RUTGERS-EAGLETON POLL

[eagletonpoll.rutgers.edu](http://eagletonpoll.rutgers.edu)  
[eagletonpollblog.wordpress.com](http://eagletonpollblog.wordpress.com)

### PROGRAM ON IMMIGRATION AND DEMOCRACY

[epid.rutgers.edu](http://epid.rutgers.edu)

### YOUTH POLITICAL PARTICIPATION PROGRAM

[ruvoting.rutgers.edu](http://ruvoting.rutgers.edu)

### PHOTOS IN THIS REPORT WERE TAKEN BY:

Randi Chmielewski  
Sarah Kozak  
Anastasia Mann  
Lisa Soga



## Sign Up for Eagleton E-News!

Get our monthly e-newsletter with event information, program activities, and Institute news!

### TEXT

EAGLETON to 22828

### EMAIL

[events@eagleton.rutgers.edu](mailto:events@eagleton.rutgers.edu)

**SUBJECT LINE:** Join E-News List

### WEBSITE

[eagleton.rutgers.edu](http://eagleton.rutgers.edu)



## "Like" Us on Facebook!

### EAGLETON INSTITUTE OF POLITICS

[Facebook.com/Eagleton.Institute](https://www.facebook.com/Eagleton.Institute)

### CAG

[Facebook.com/CenterOnTheAmericanGovernor](https://www.facebook.com/CenterOnTheAmericanGovernor)

### CAWP

[Facebook.com/WomenAndPolitics](https://www.facebook.com/WomenAndPolitics)

### NEW LEADERSHIP NJ

[Facebook.com/NEWLeadershipNJ](https://www.facebook.com/NEWLeadershipNJ)

### ECPIP

[Facebook.com/RutgersEagletonPoll](https://www.facebook.com/RutgersEagletonPoll)

### YPPP

[Facebook.com/Youth.Eagleton](https://www.facebook.com/Youth.Eagleton)



## Follow us on Twitter!

### CAWP

[@cawp\\_ru](https://twitter.com/@cawp_ru)

### ECPIP

[@EagletonPoll](https://twitter.com/@EagletonPoll)

EAGLETON INSTITUTE OF POLITICS  
Rutgers, The State University of New Jersey

191 Ryders Lane | New Brunswick, NJ | 08901-8557  
P: 732.932.9384 | F: 732.932.6778 | [www.eagleton.rutgers.edu](http://www.eagleton.rutgers.edu)

Ruth B. Mandel, Director

